

COMUNE DI DECIMOMANNU

DOTT. ING. GIOVANNI D'URBANO
VIA PARROCCHIA, 6 TEL. 070-962489
09033 DECIMOMANNU -CA-

Giuseppe Altobelli
INGEGNERE
PROVINCIA CAGLIARI
Dott. Ing. GIOVANNI D'URBANO
N.º 2161

Progetto: PIANO DI LOTTIZZAZIONE PANI-ATZORI

Oggetto tav.: TIPOLOGIA EDILIZIA E PARTICOLARI
COSTRUTTIVI

COMUNE DI DECIMOMANNU
COMMISSIONE EDILIZIA
SEDUTA N. 7/2 DEL 28 MAR. 1995
SI ESPRIME PARERE FAVOREVOLE.

Committente(i):

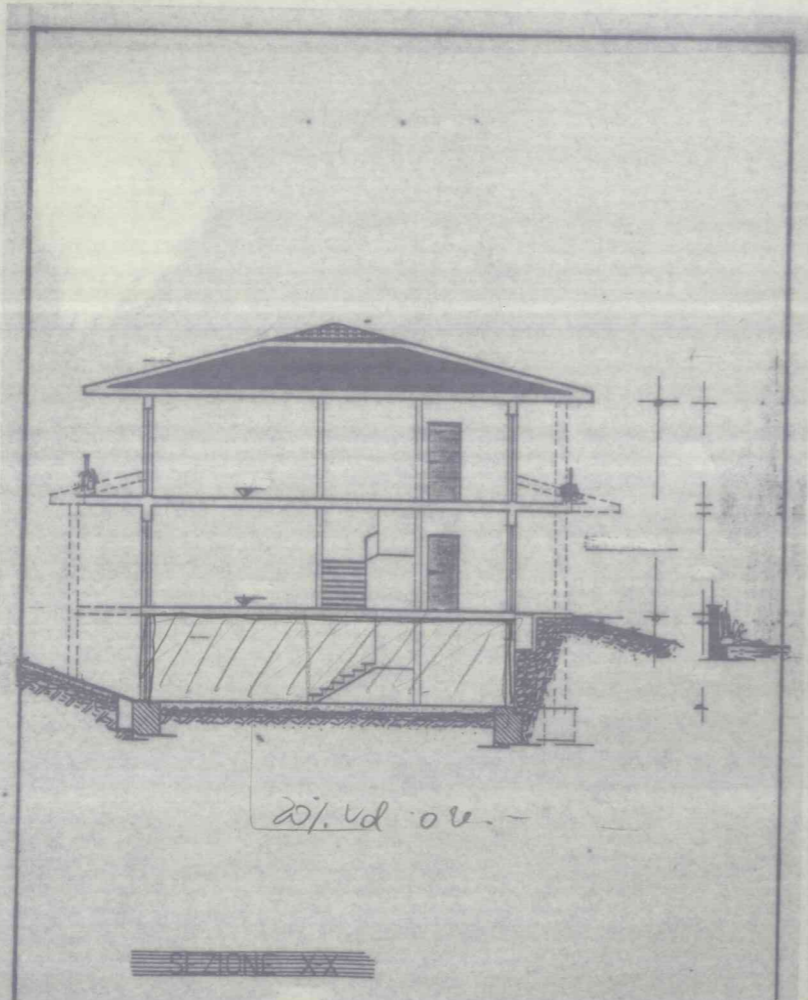
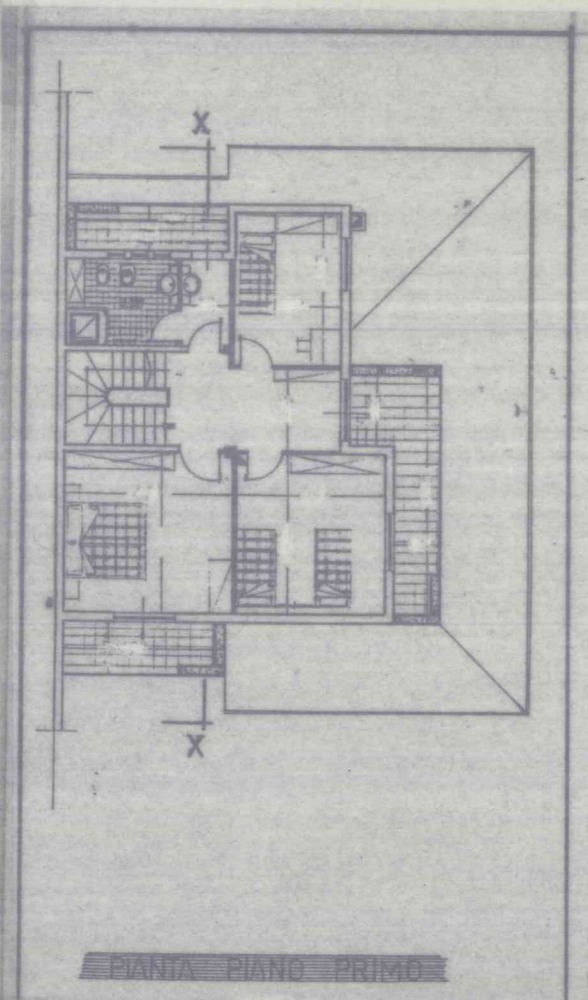
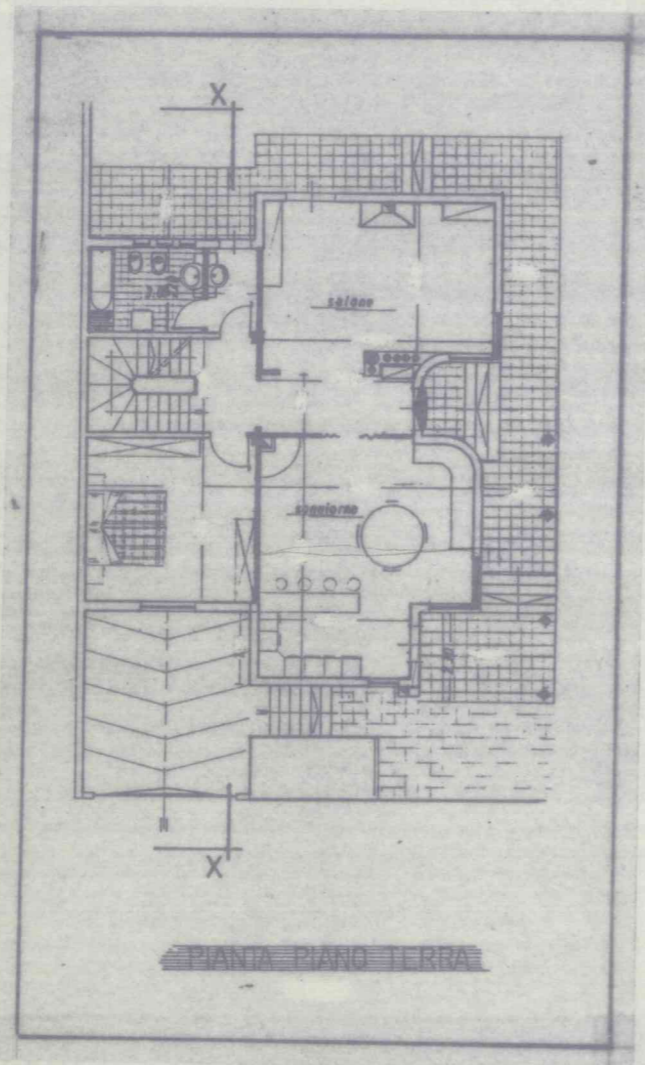
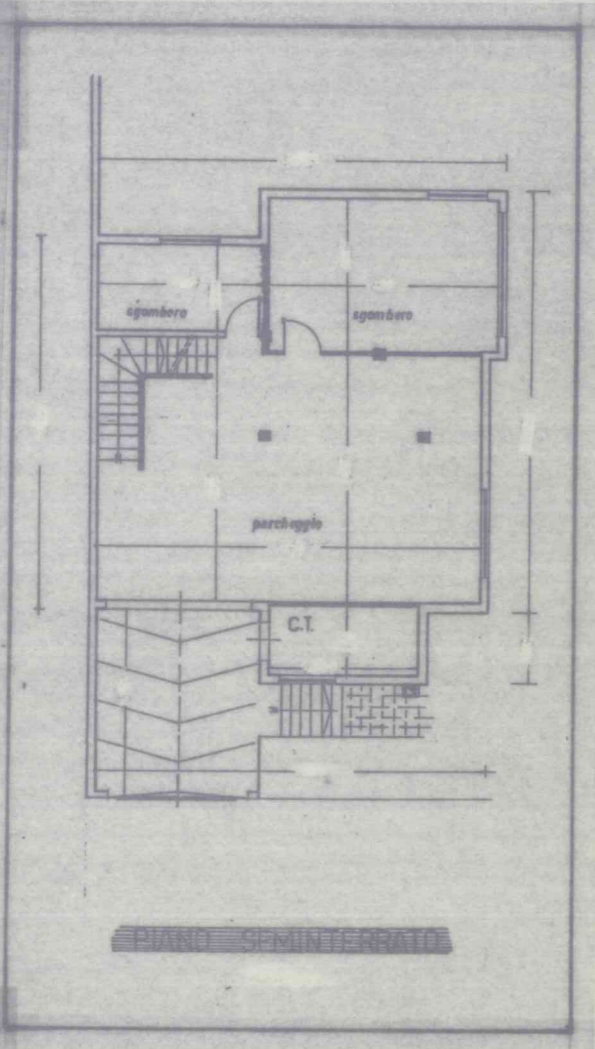
Sig.ri PANI-ATZORI

Il Segretario

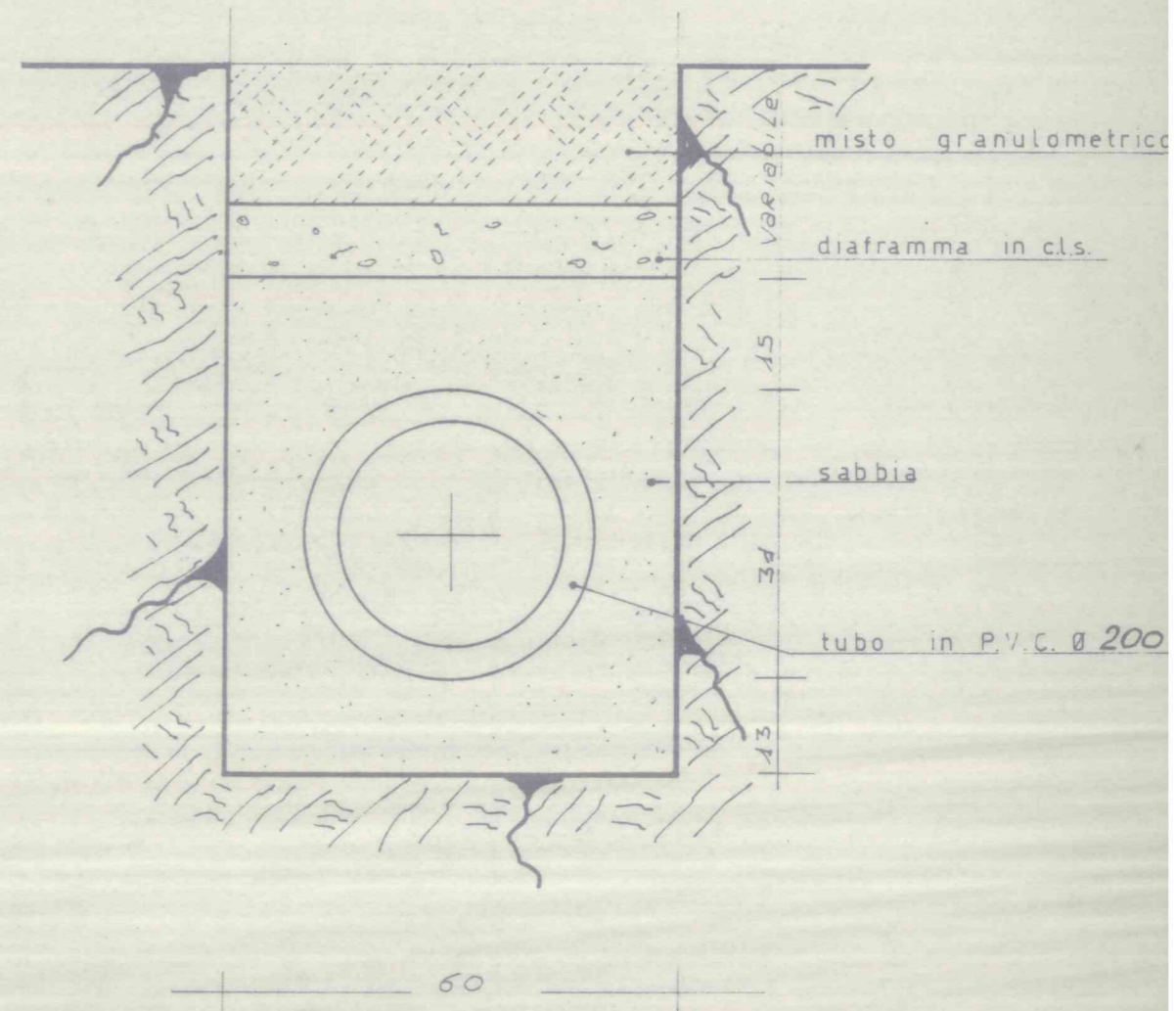
Il Presidente

*Fav Angelo
Ugoni Antonia
Cami Antonino
Paur M^{ro}*

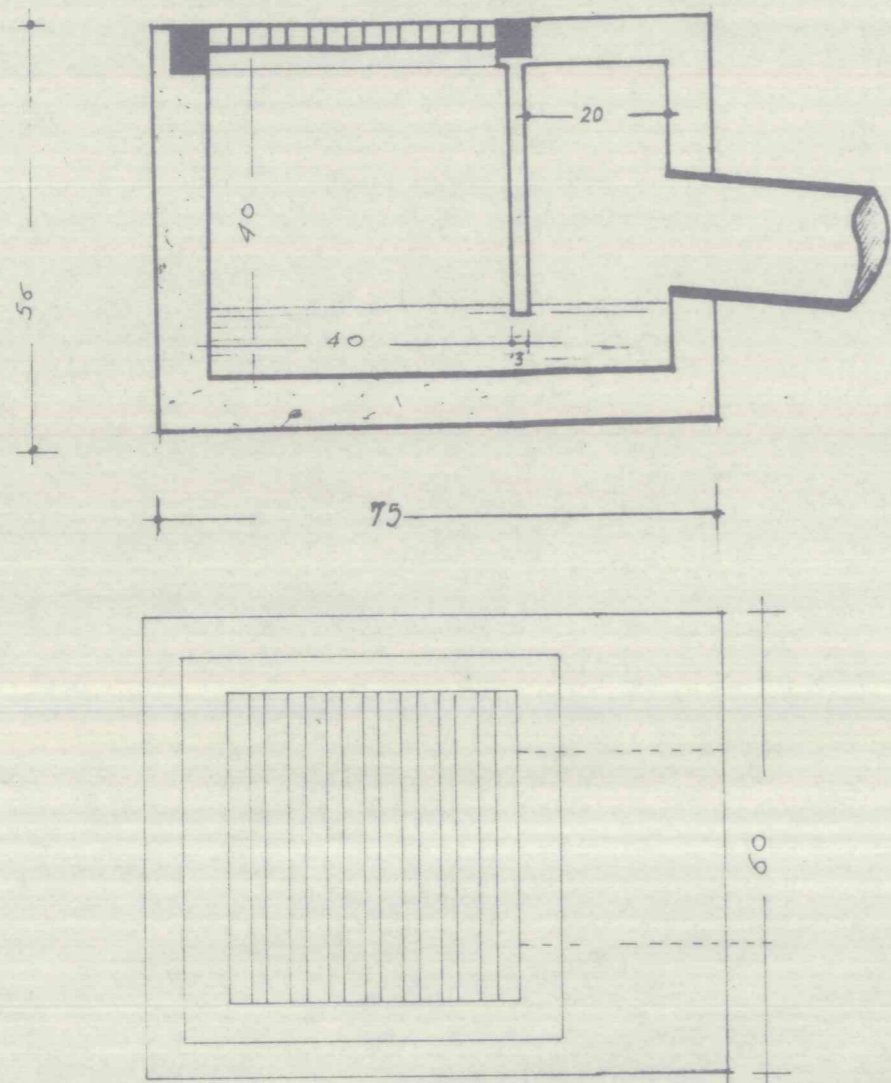
A
6



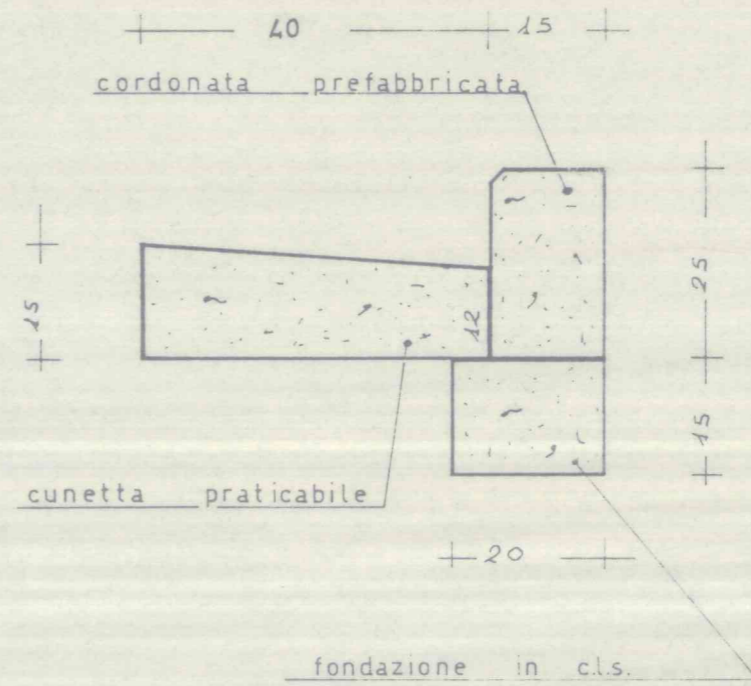
particolare del fognolo
1:10



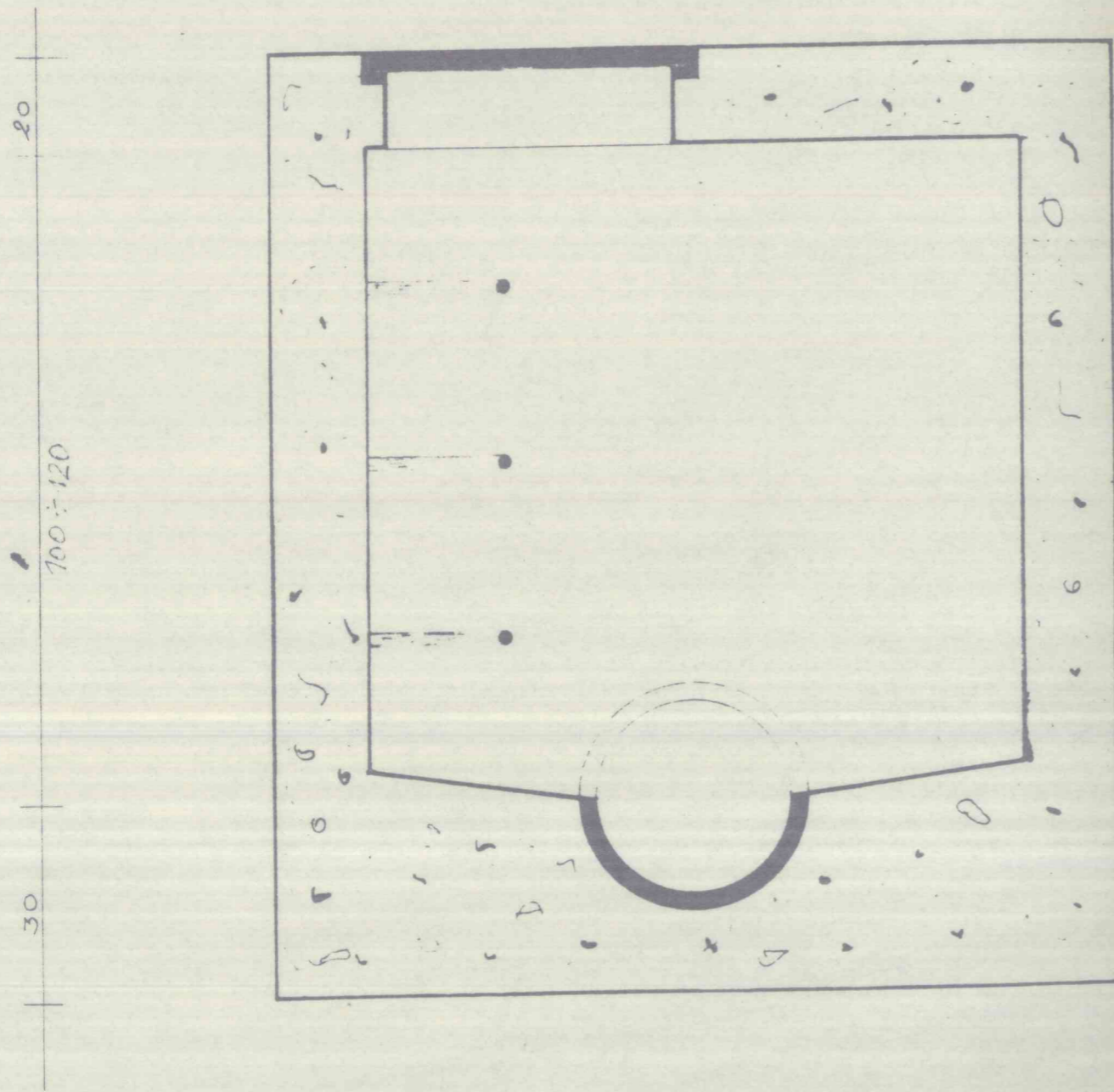
particolare caditoia 1:10



particolare cunetta 1:10

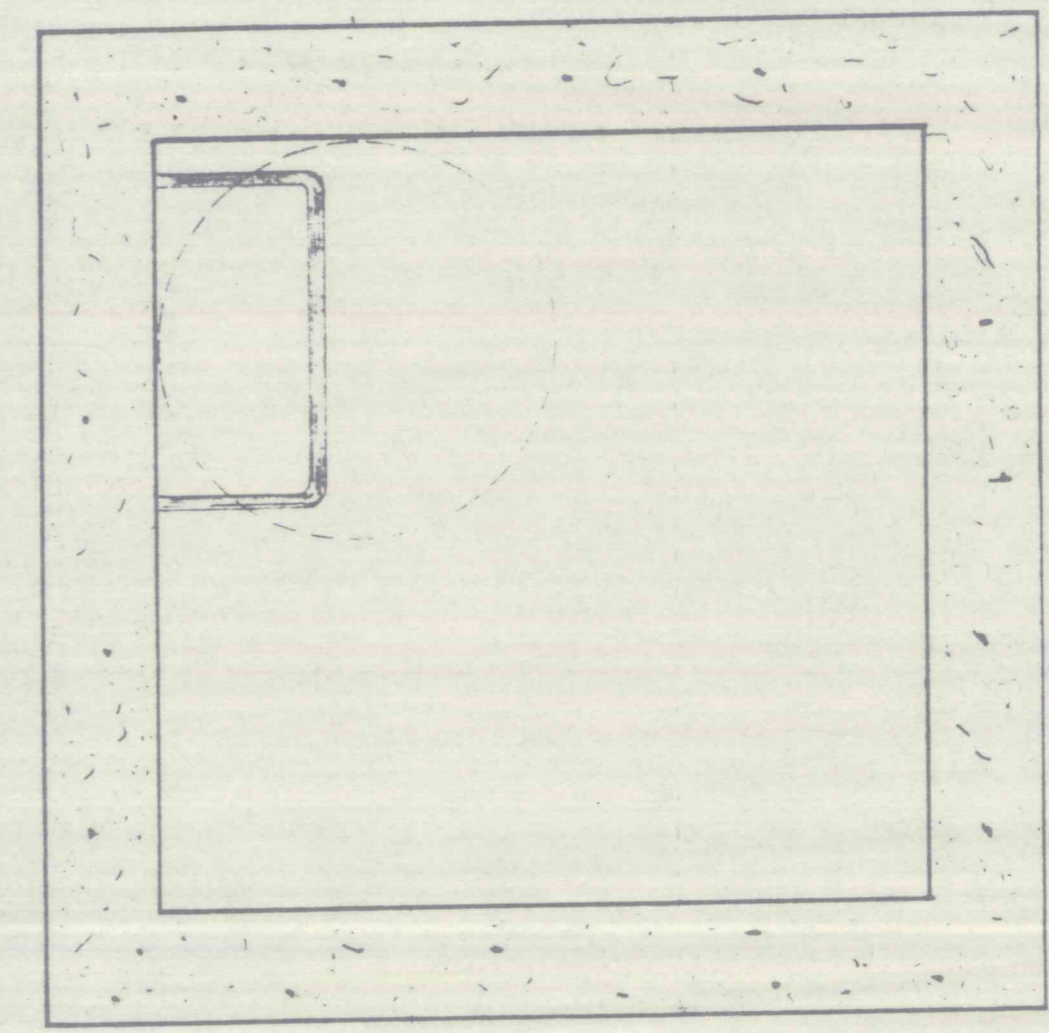


particolare pozzetto d' ispezione 1:10



20
100 ÷ 120
30

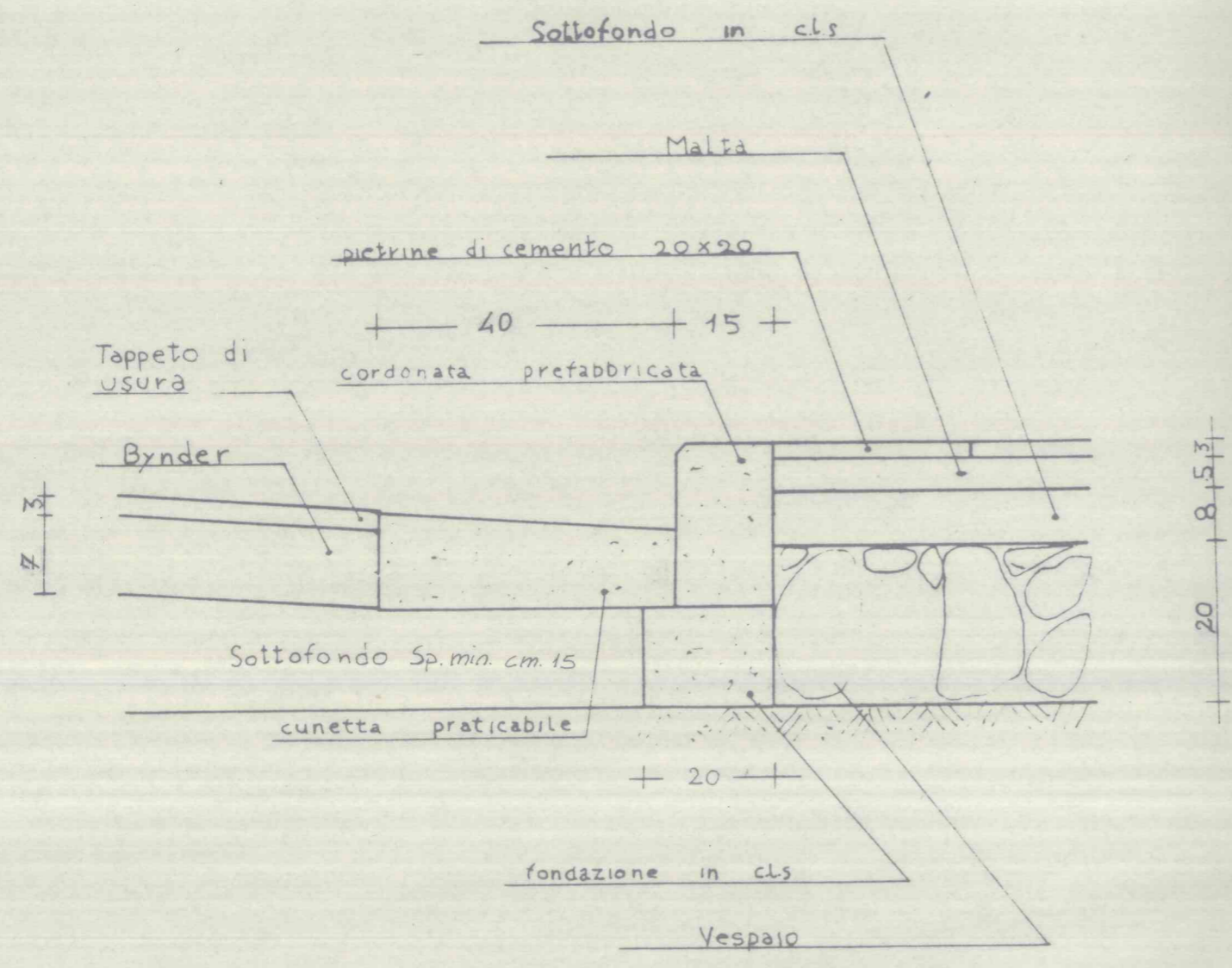
15 100 15



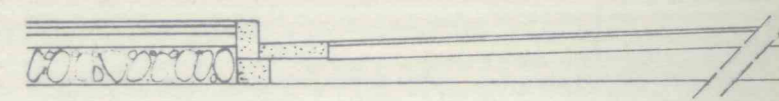
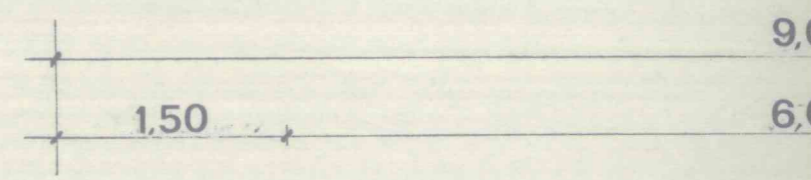
15
100
15
15 100 15

Particolare strada con cunetta e marciapiede

1:10

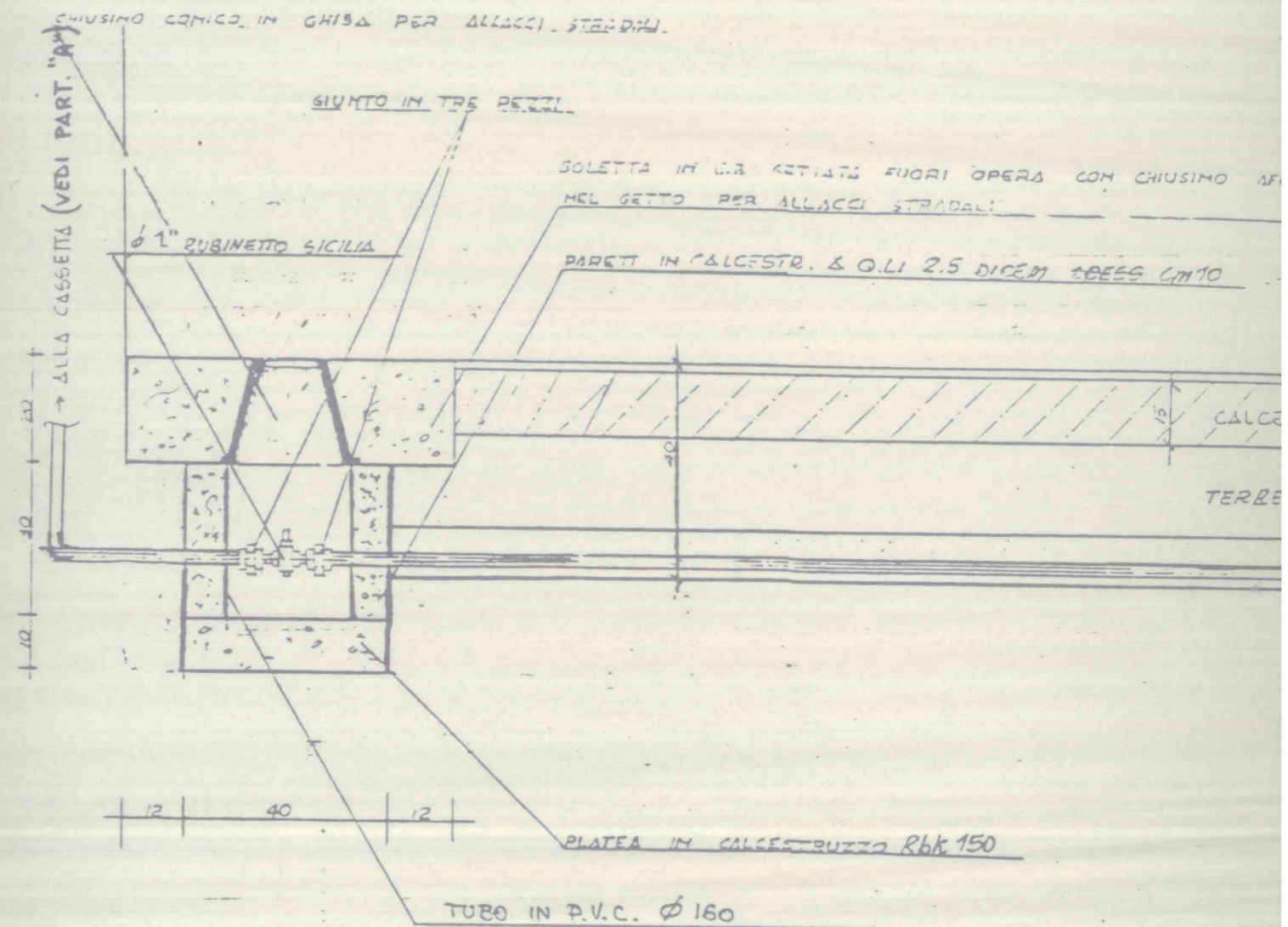


1:50

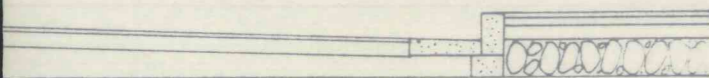


PARTICOLARE SEZIONE STRADA

ALLACCIO IDRICO

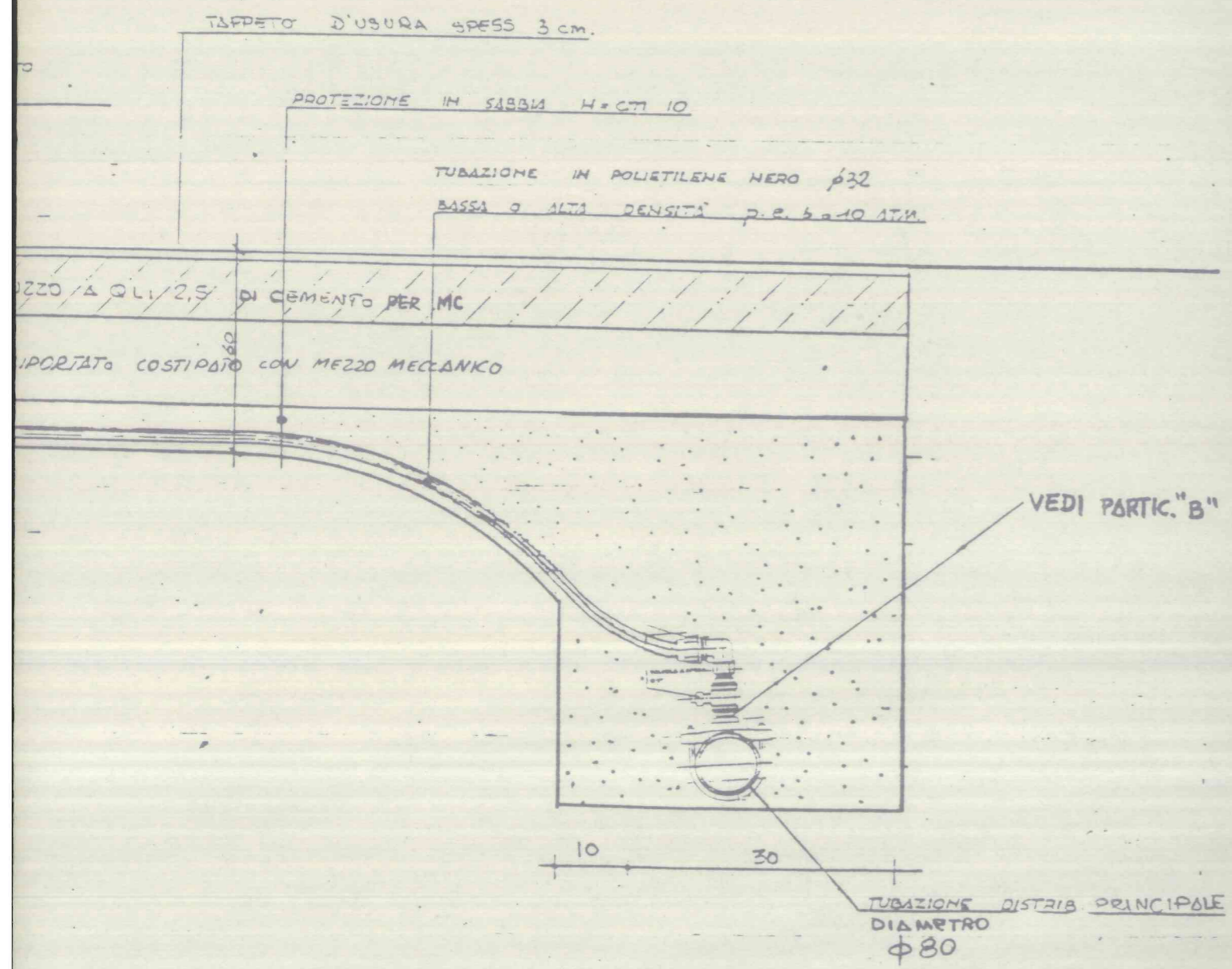


1.50

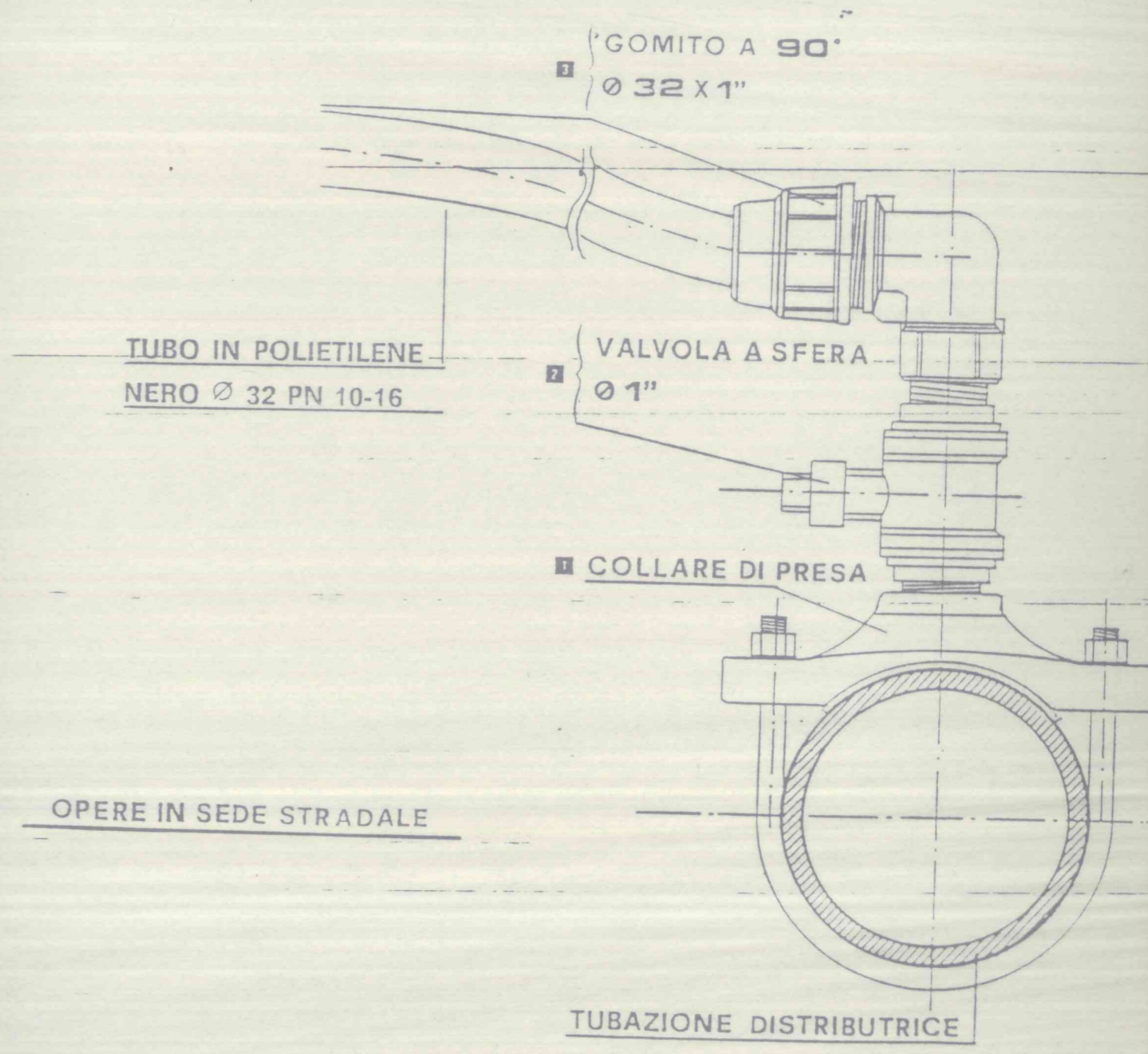


I

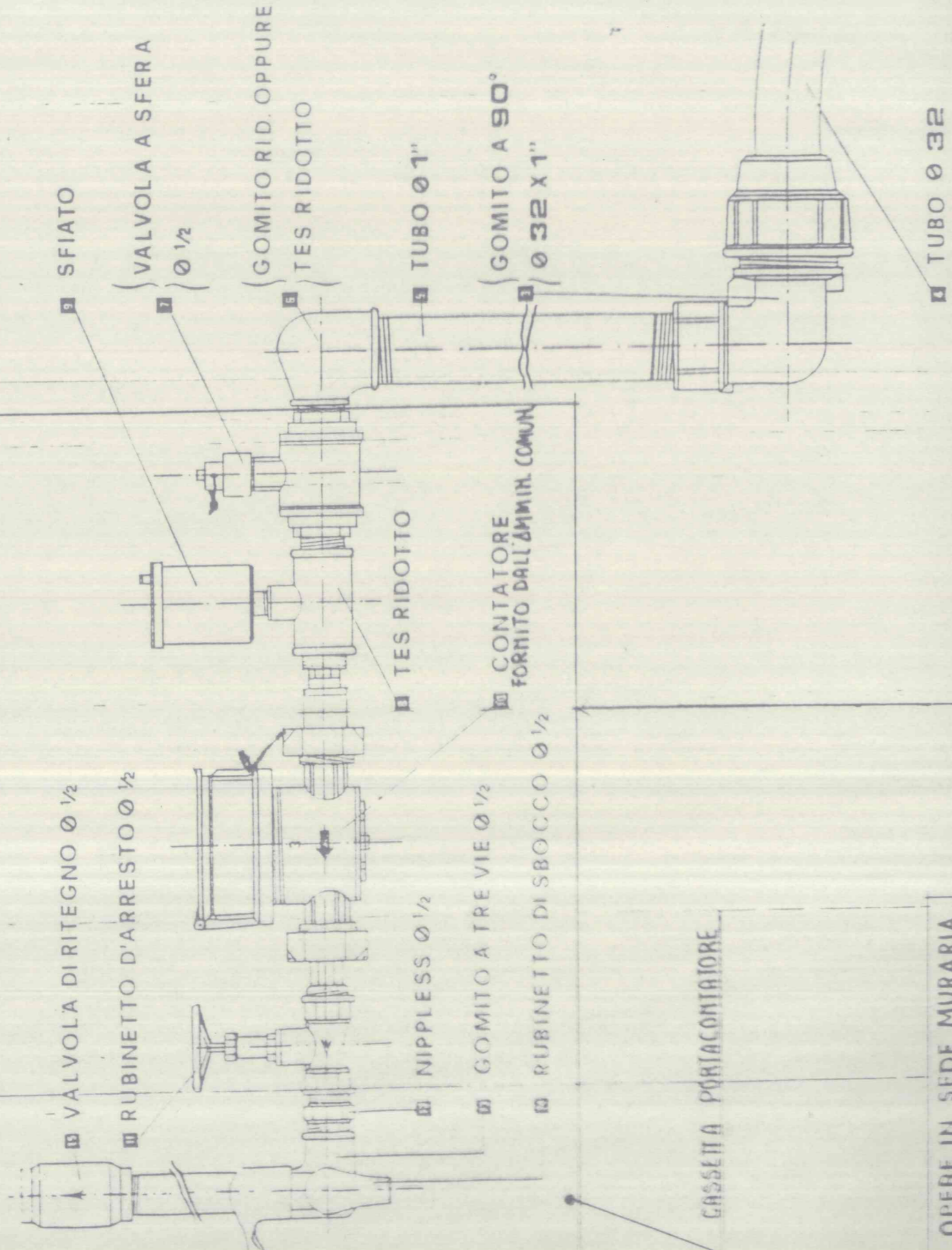
SC. 1:10



PARTICOLARE "B"
ALLACCIO IDRICO TIPO



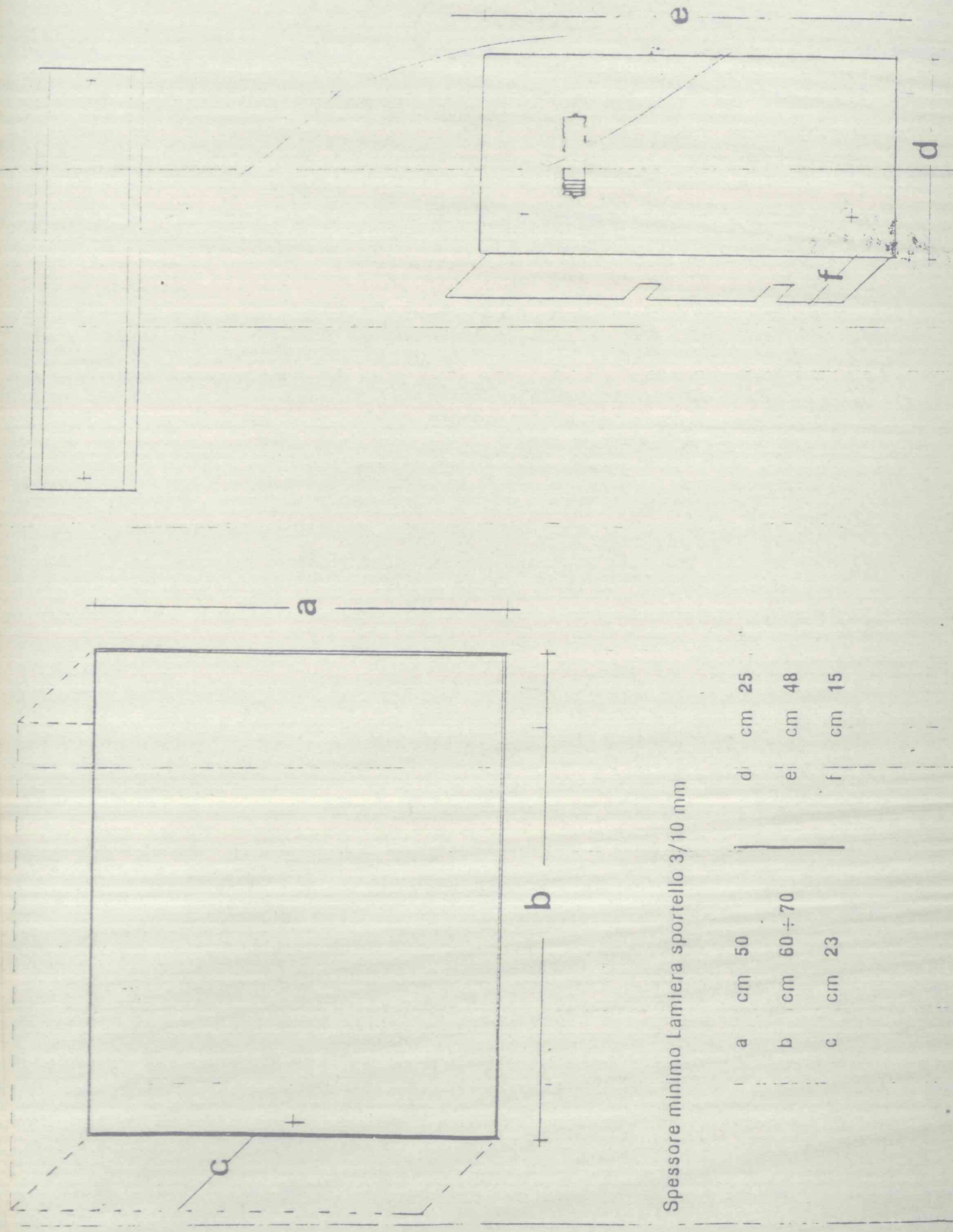
PARTICOLARE 'A'



CASSETTA PORTACONTATORE

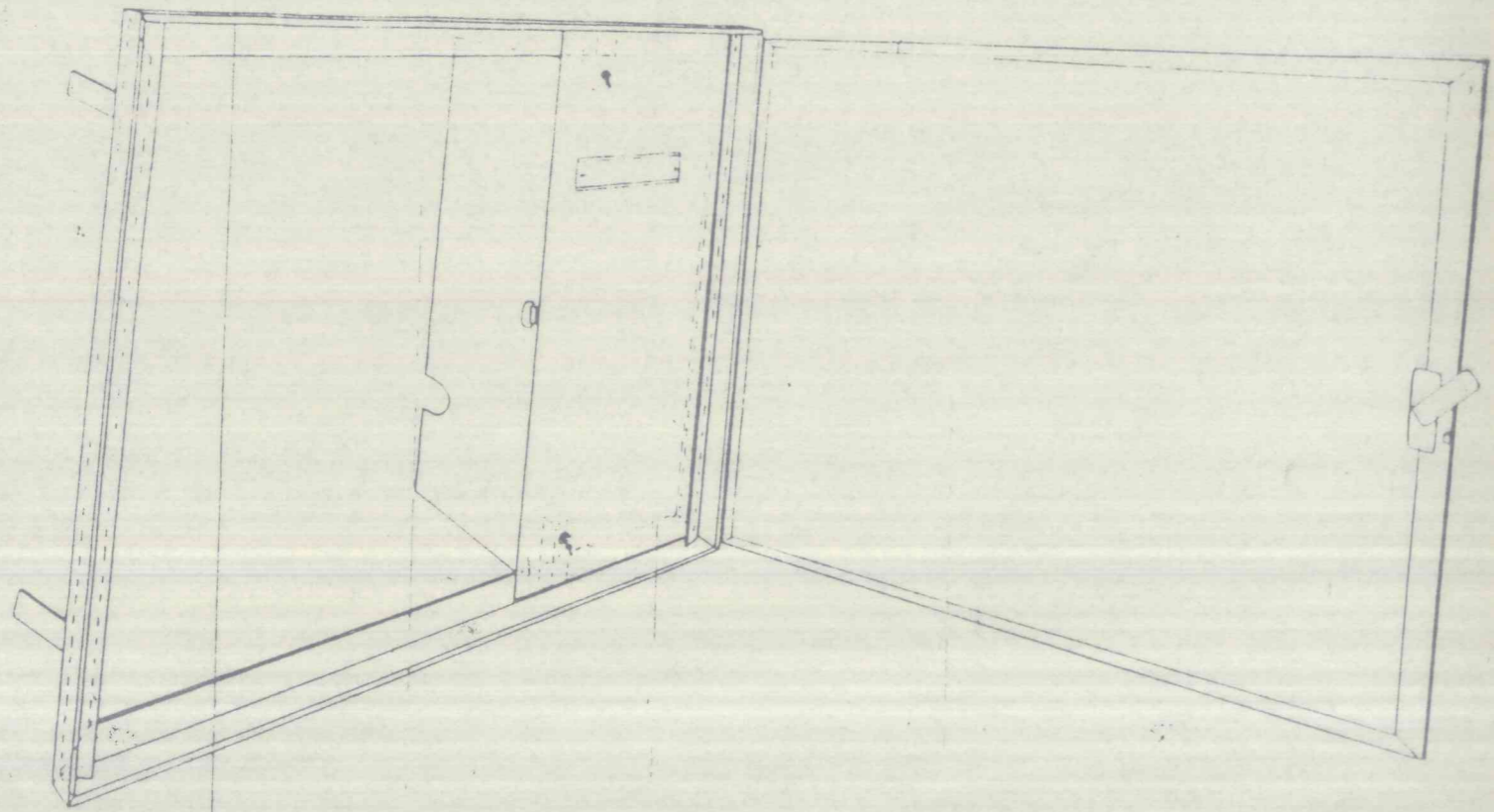
OPERE IN SEDE MURARIA

PARTICOLARE "C"
CASSETTA PORTA CONTATORE



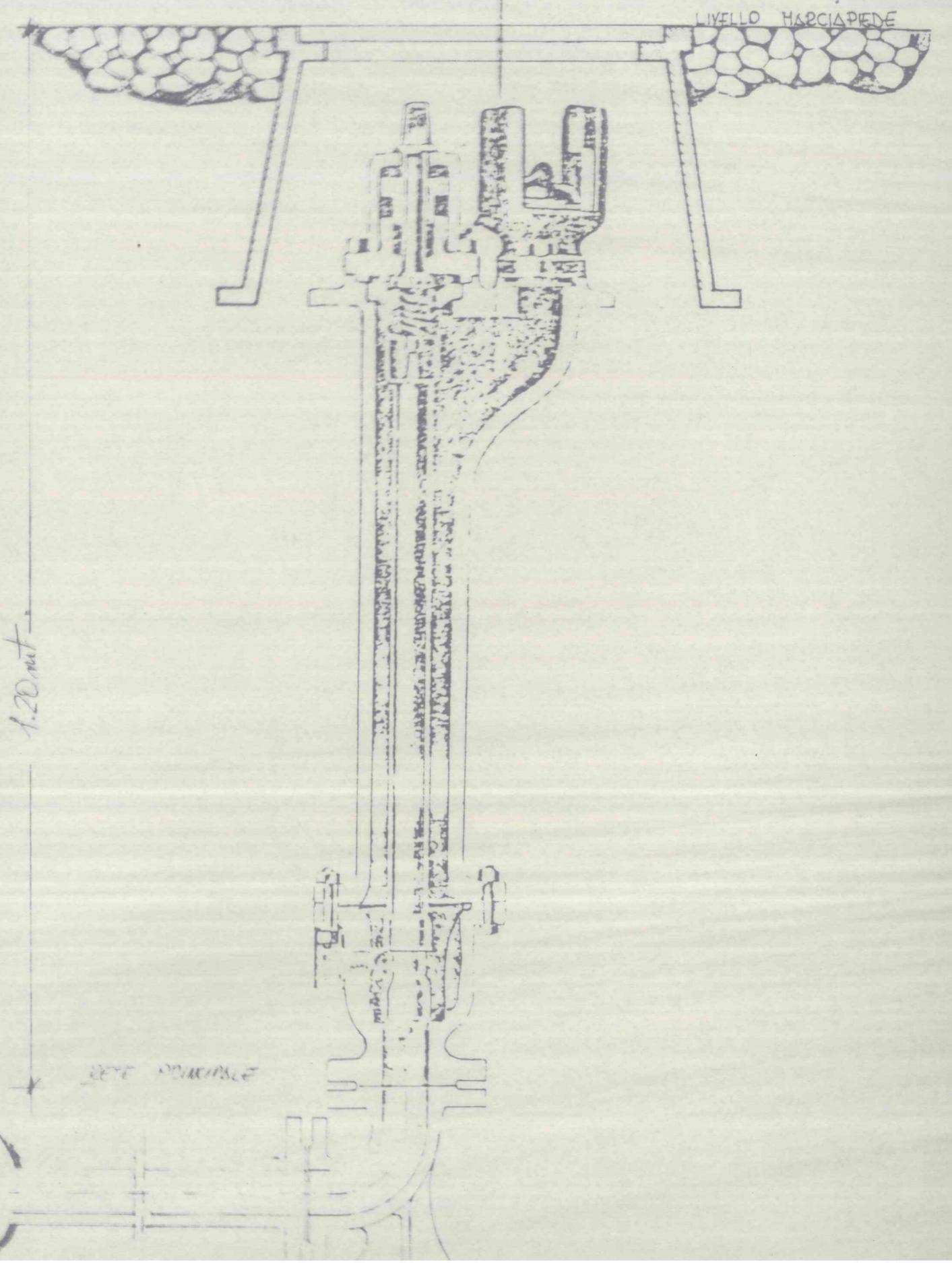
Spessore minimo Lamiera sportello 3/10 mm

a	cm 50	d	cm 25
b	cm 60 + 70	e	cm 48
c	cm 23	f	cm 15



Prospettiva dello sportello

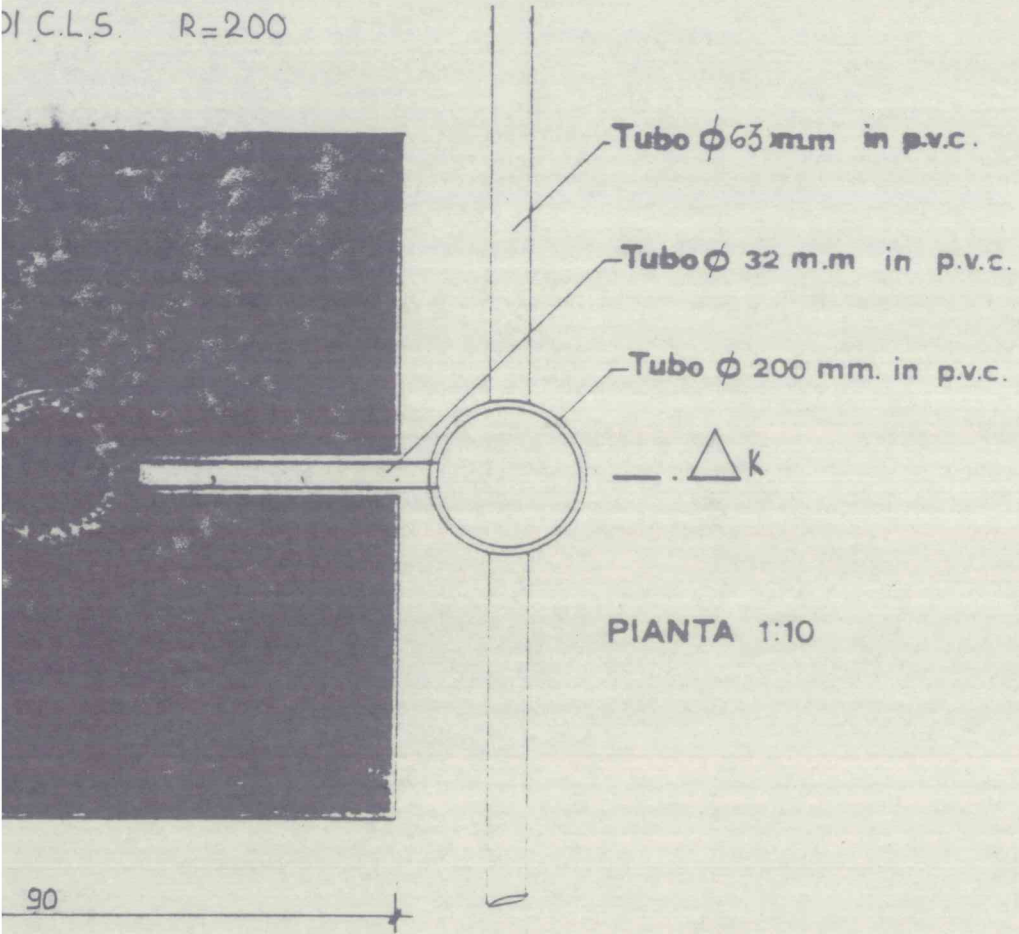
IDRANTE STRADALE SOTTOSUOLO
SC. 1:5



1.20 mt.

RETE POSSIBILE

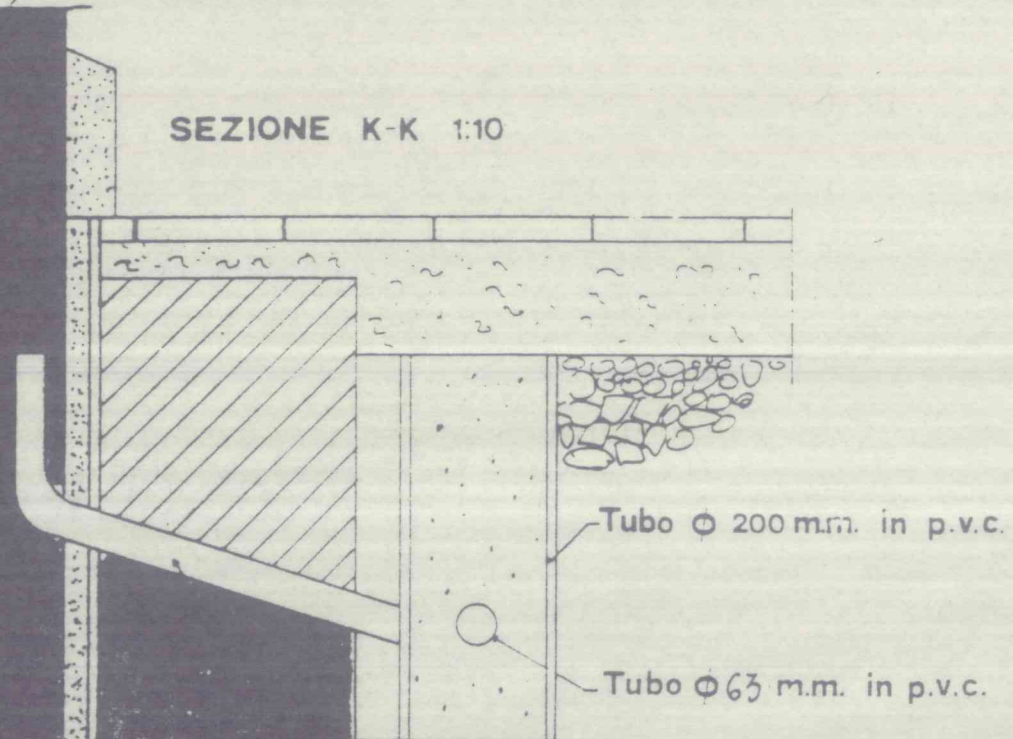
DI C.L.S. R=200



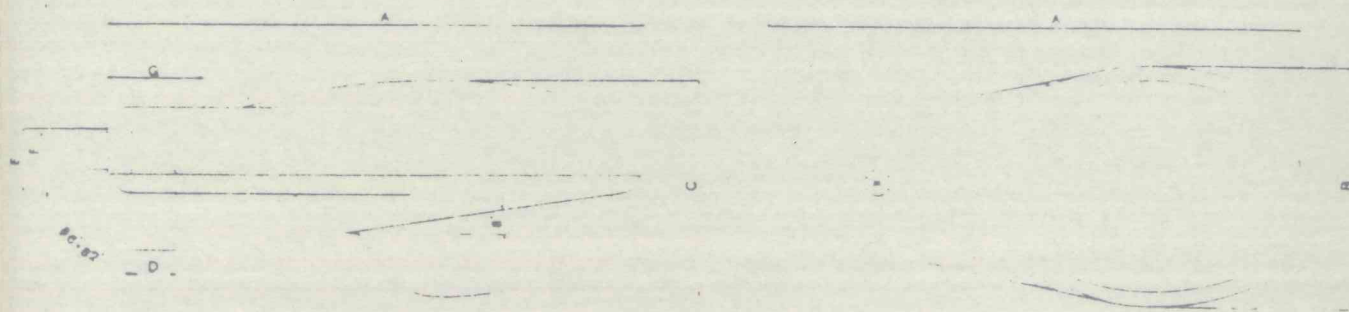
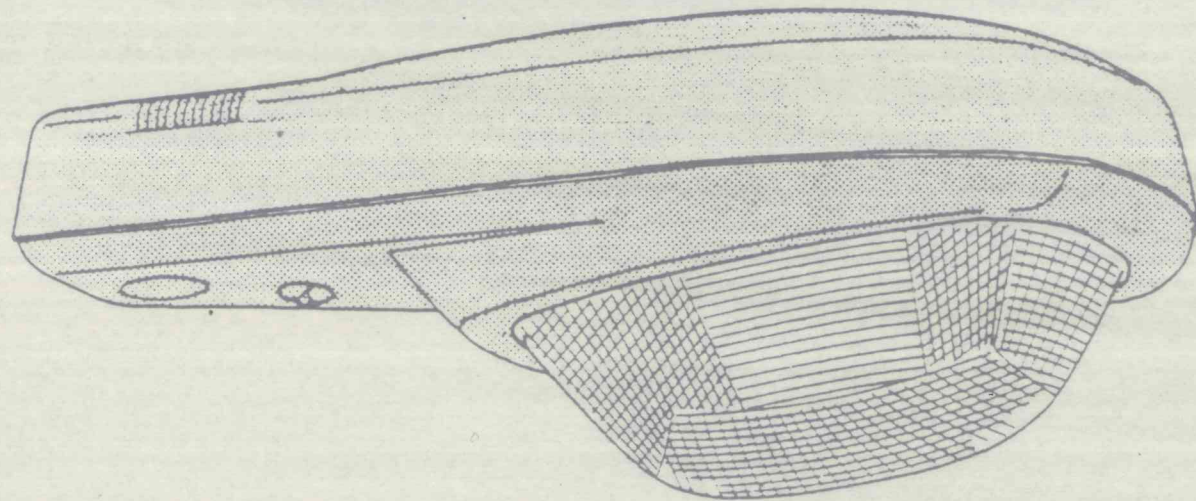
PIANTA 1:10

Palo dalmine conico

SEZIONE K-K 1:10

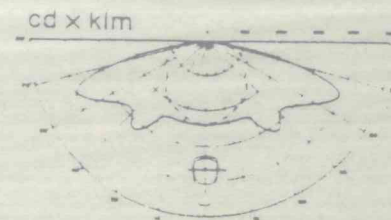


PALO TIPO DALMINE HSP



- Corpo portante in presso fusione di alluminio.
- Riflettore in vetro in Borosilicato a prismatura differenziata.
- Copertura in materia plastica speciale antivecchiante.
- Riflettore in alluminio anodizzato titolo 99.8%.
- Predisposizione per fotocellula.
- Portalampade in porcellana E 40 a norme con regolazione orizzontale-verticale.
- Contenitore portalampade in materiale isolante.
- Piastra portareattore in materiale isolante.

PARTI
CILINDRICA
0.80



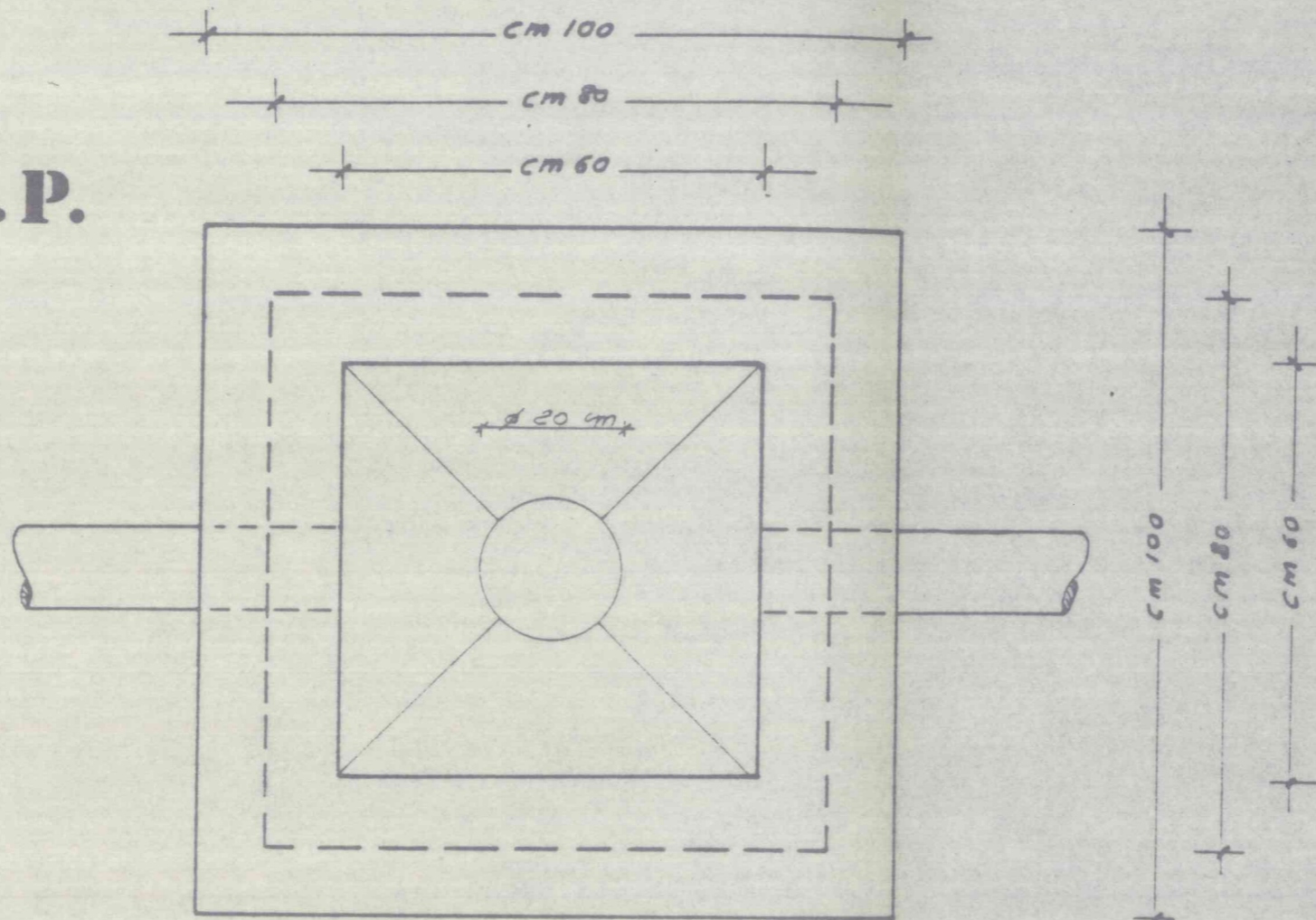
0.07

7.20

0.127

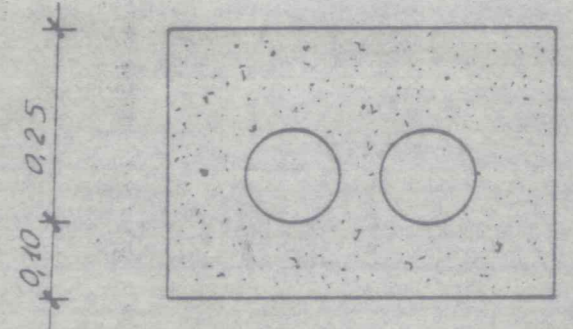
POZZETTO S.I.P.

2



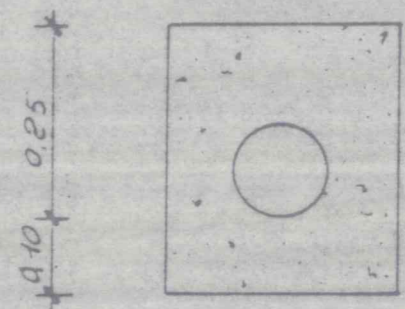
*Rivestimento tubazioni
in c. l. s. magro (4,5 fili/mc)*

0,50

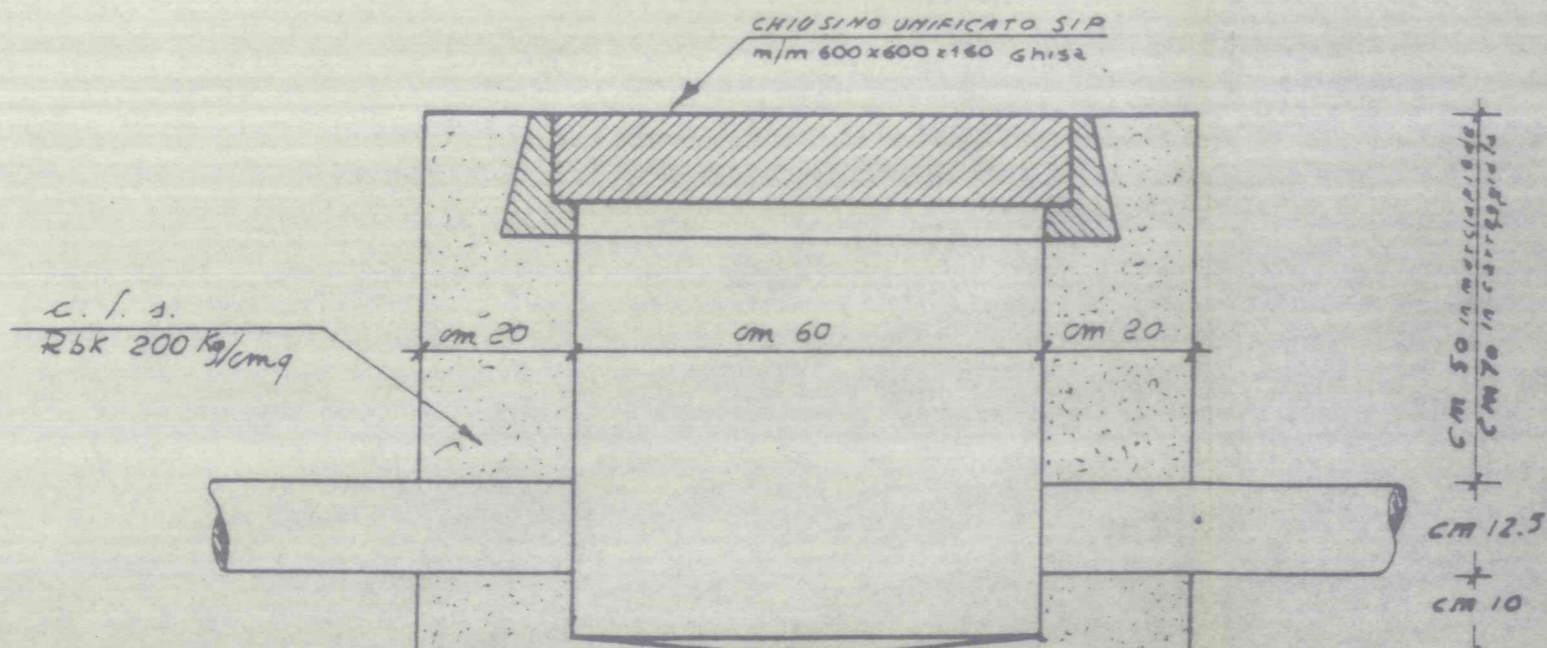


*tratta con due tubi
c. l. s. 0,15 mc/ml*

0,30



*tratta con un tubo
c. l. s. 0,09 mc/ml*



CM 50 in mersidolite
CM 70 in cartongipso
CM 12,5
CM 10