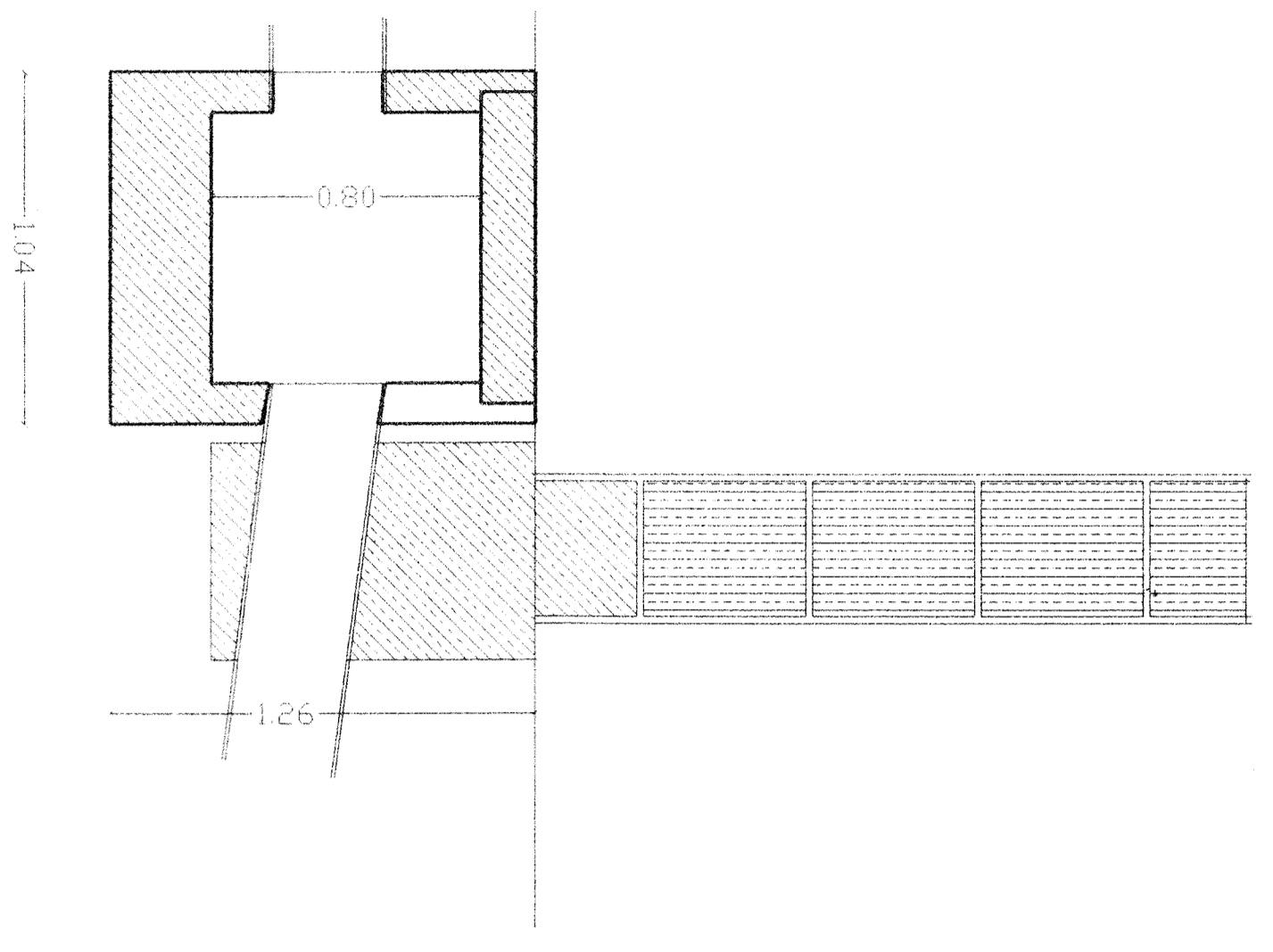


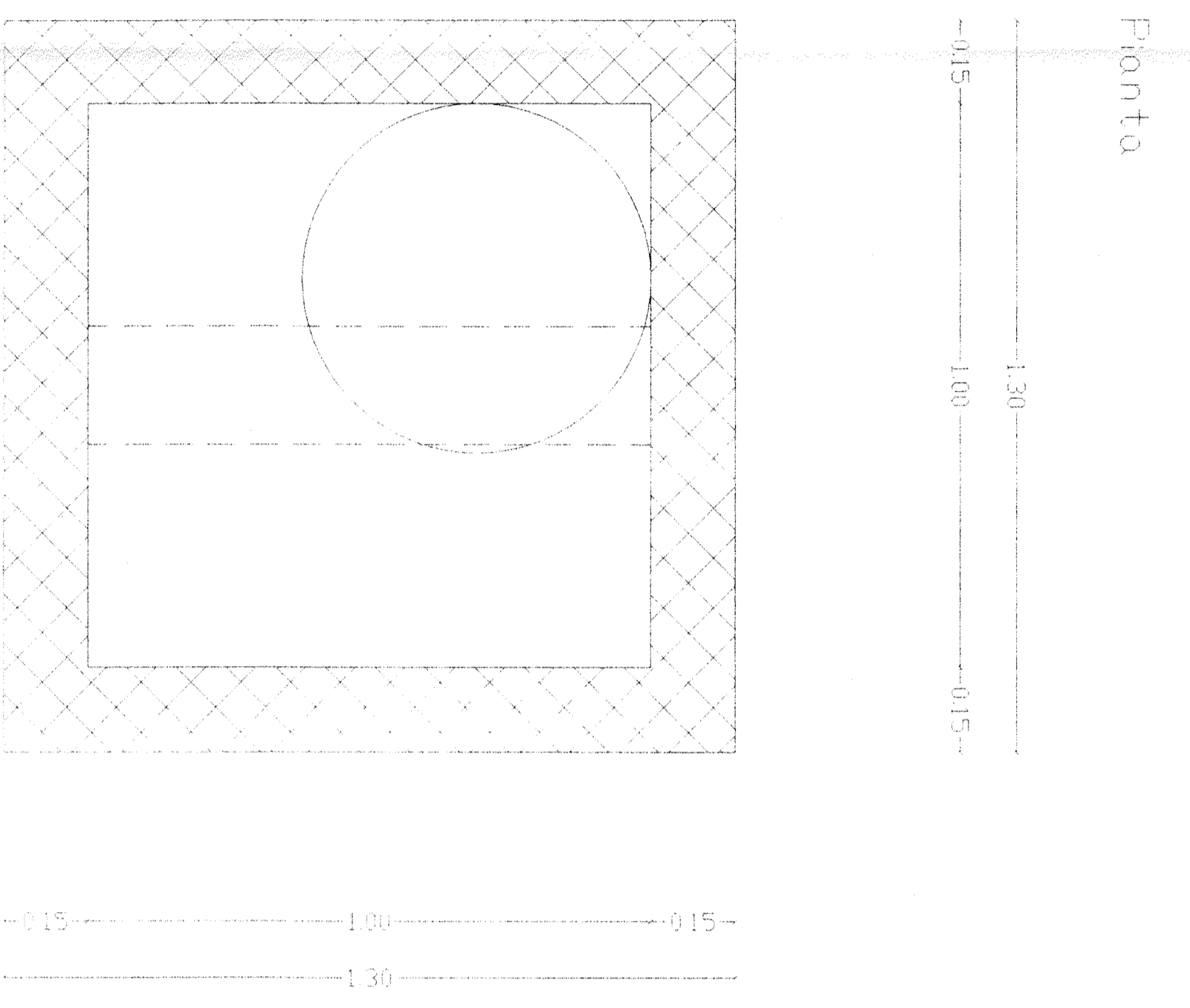
Particolare allaccio fognario

Scala 1:20

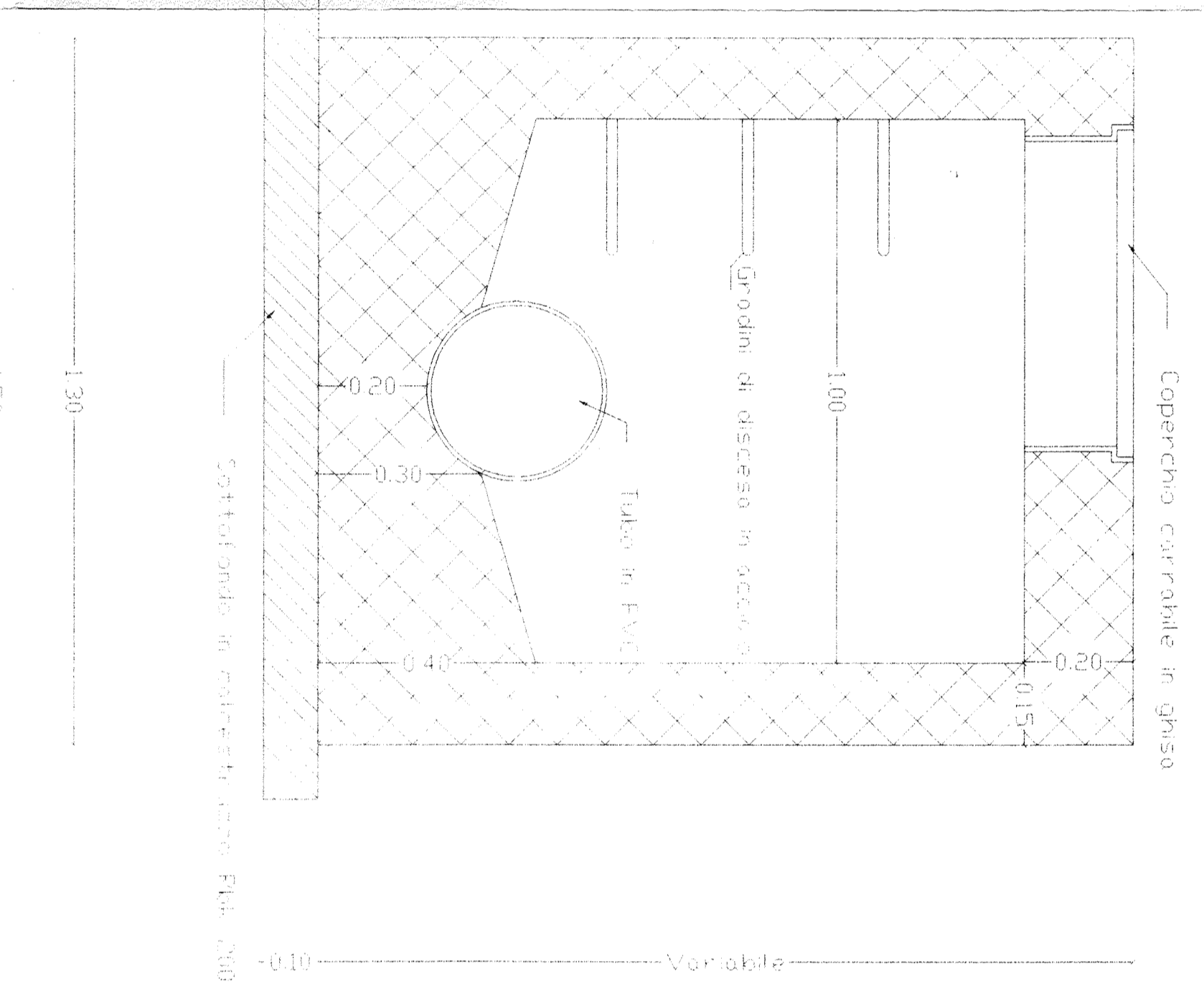


Particolare pozzetto di dispersione fogne bianche

Scala 1:10

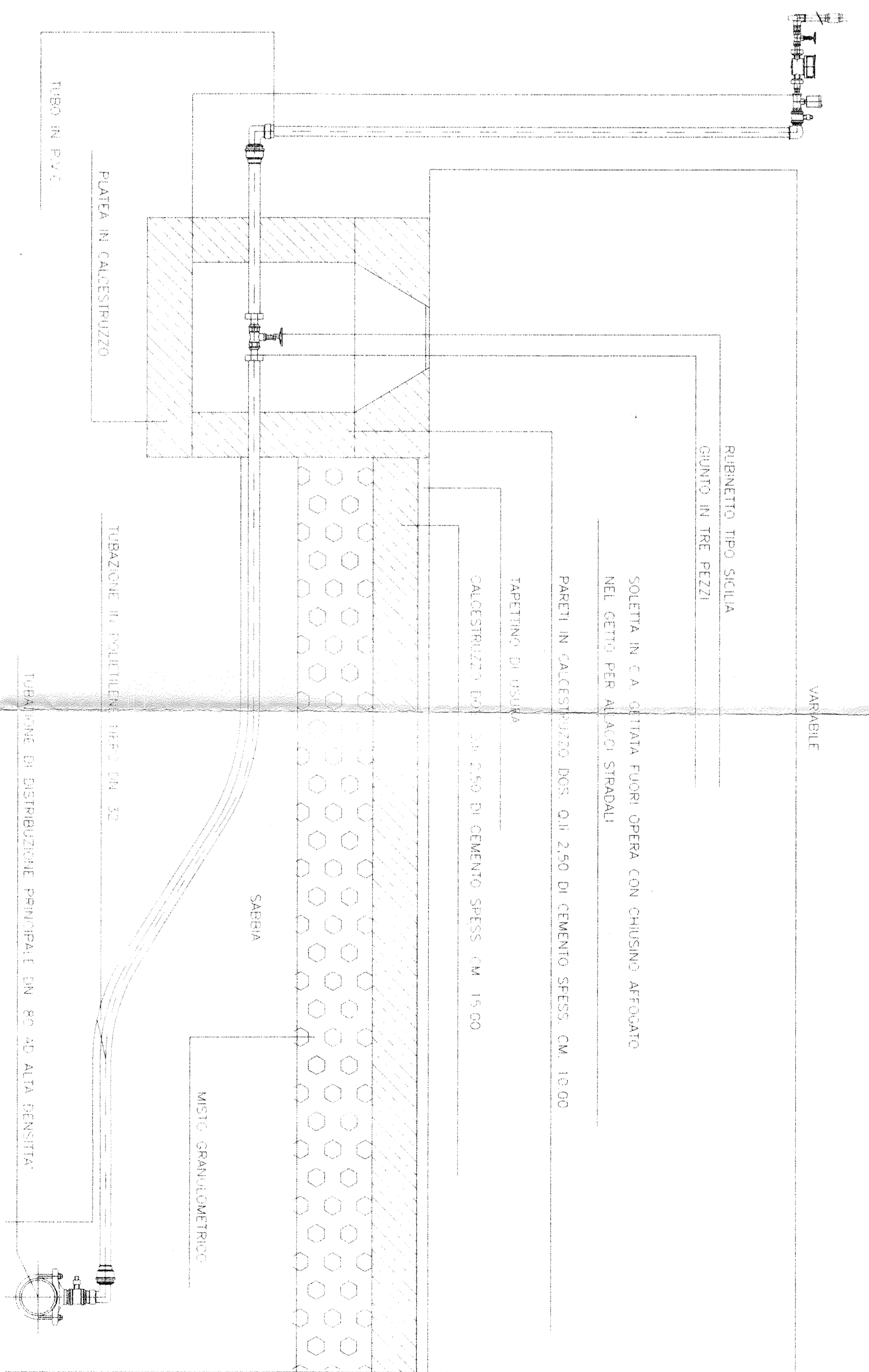


Sezione



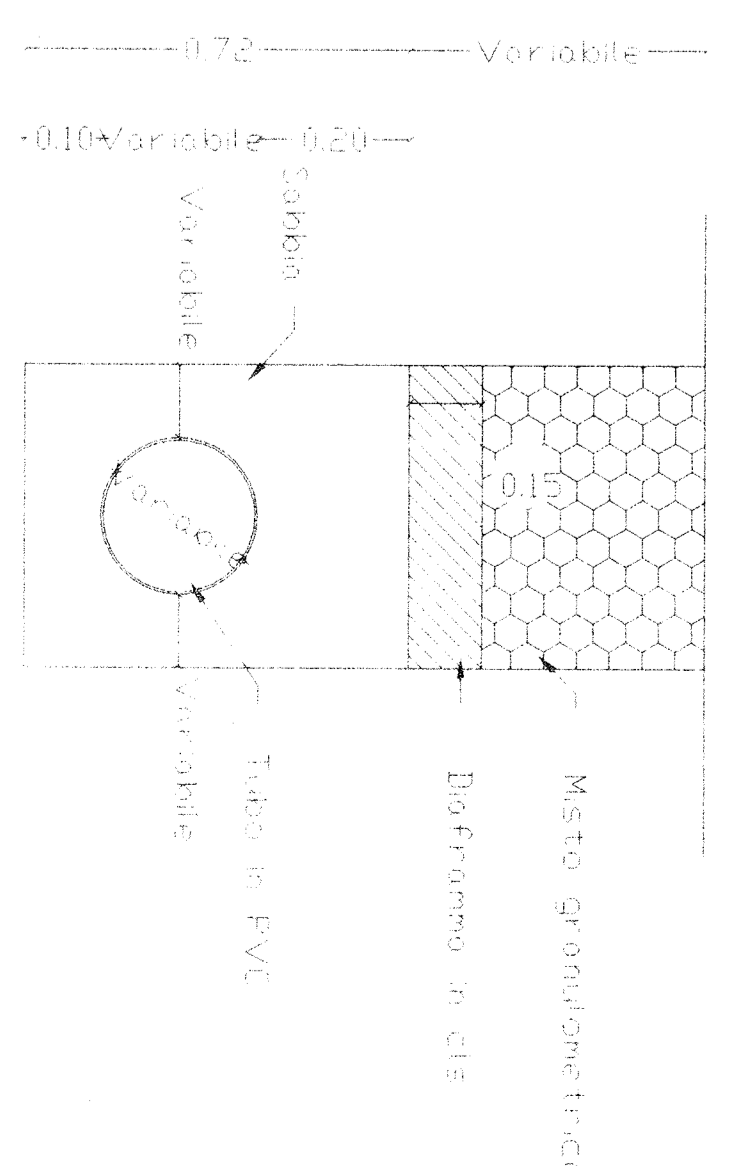
Particolare allaccio idrico

Scala 1:10



Particolare fognolo

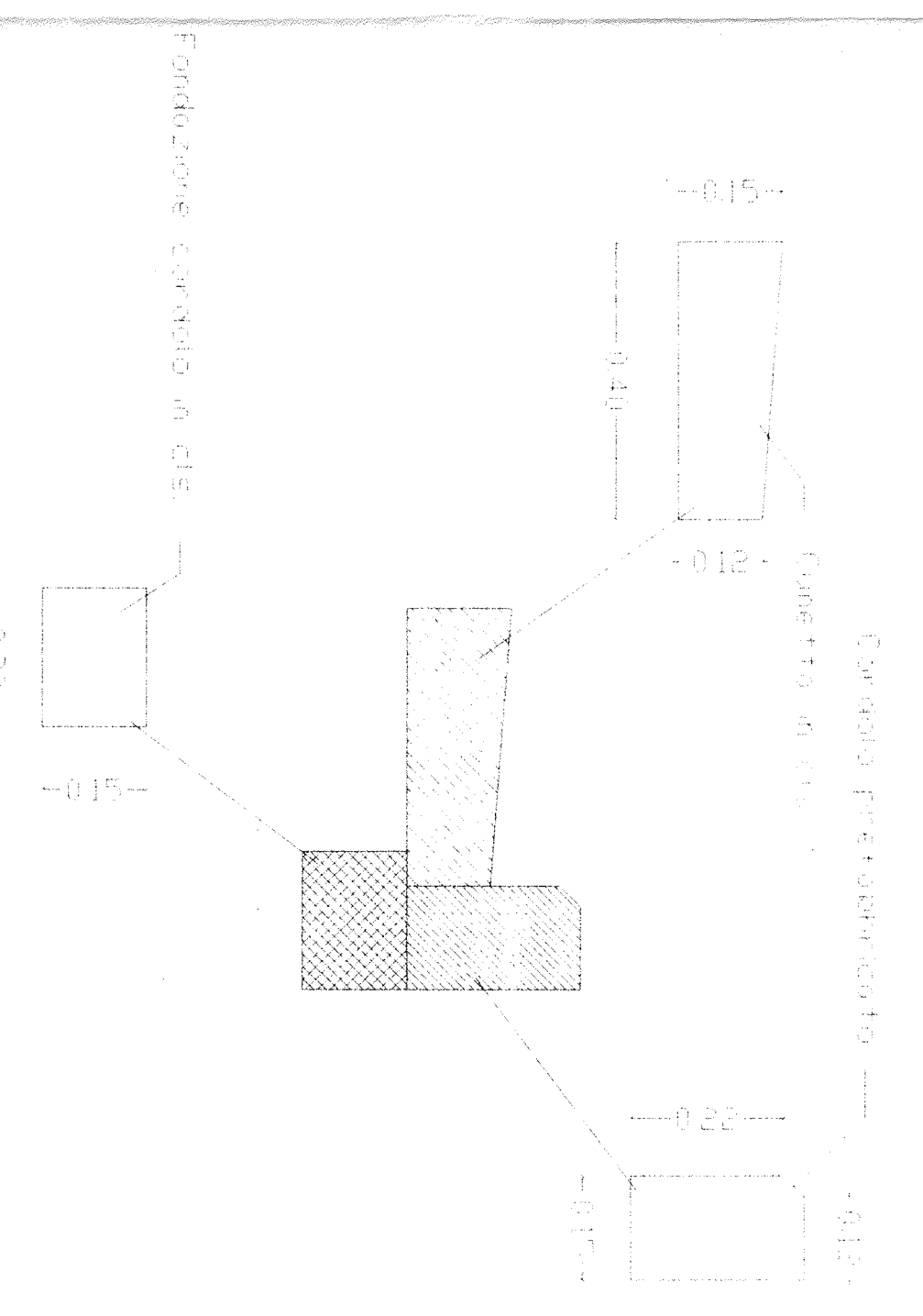
Scala 1:10



N.B. Il galleggiante in c.c. è presente per altezze 50 e riempimento in misto granulometrico differenziato a 2m/2m

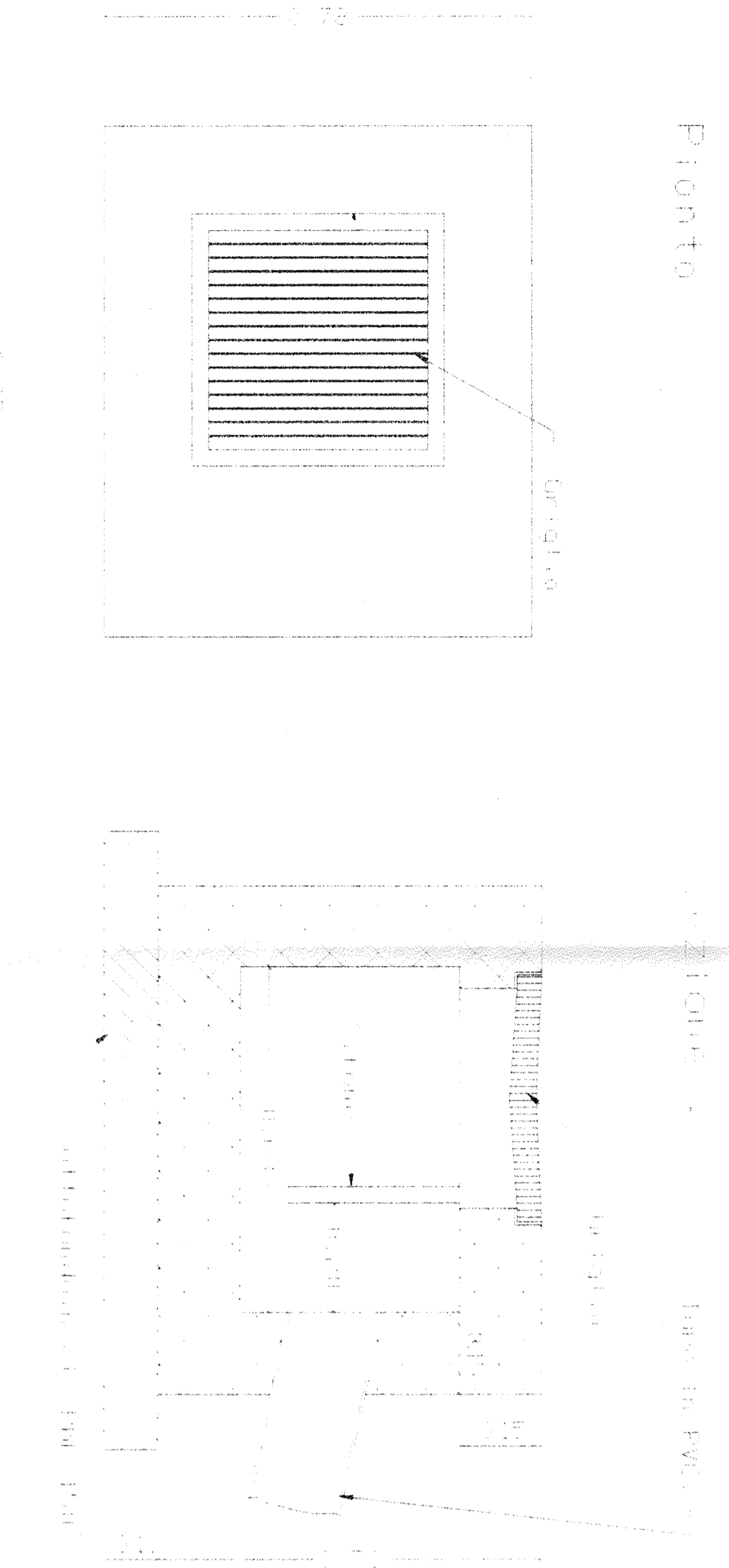
Particolare cassetta e cordolo

Scala 1:10



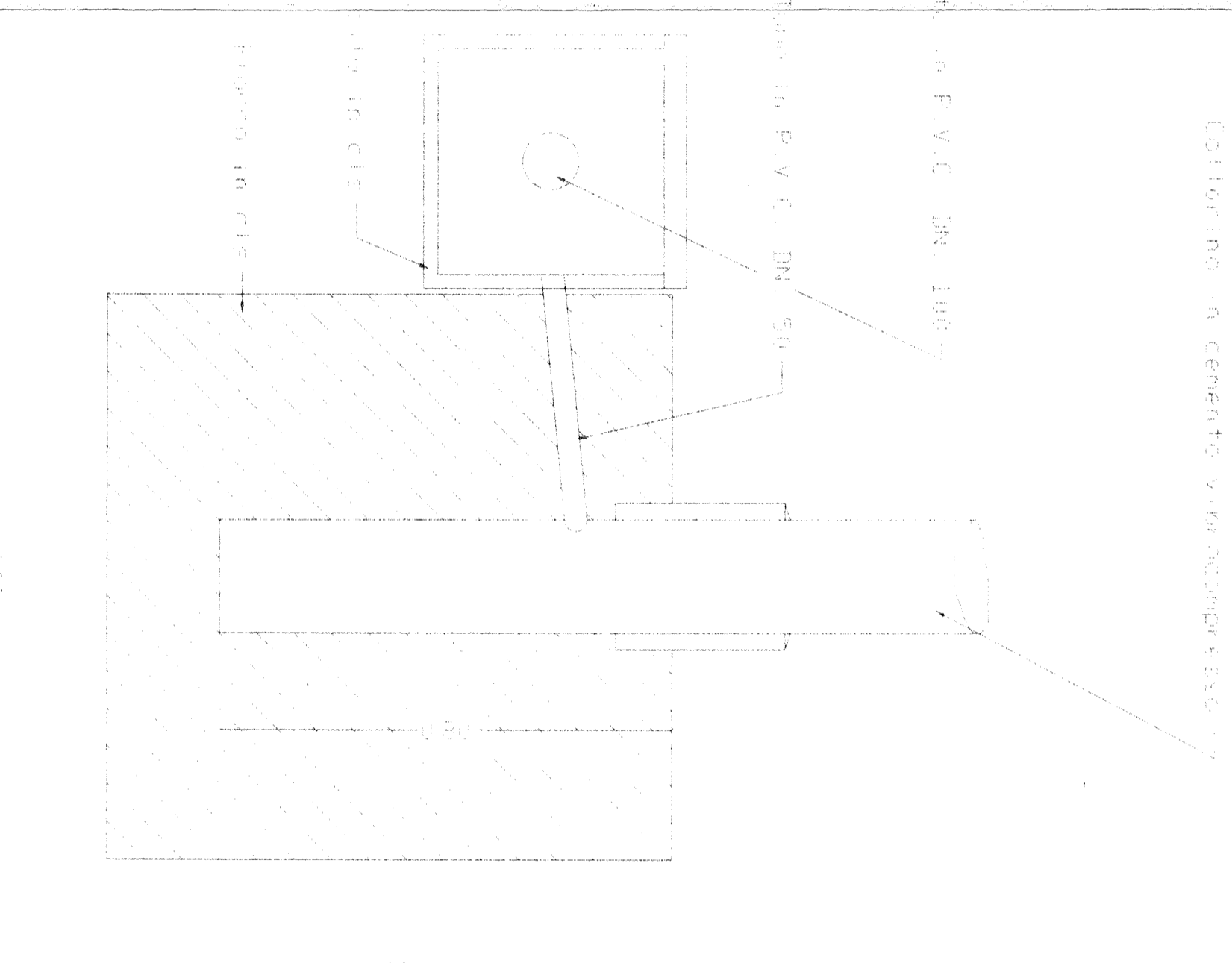
Particolare caduta

Scala 1:10



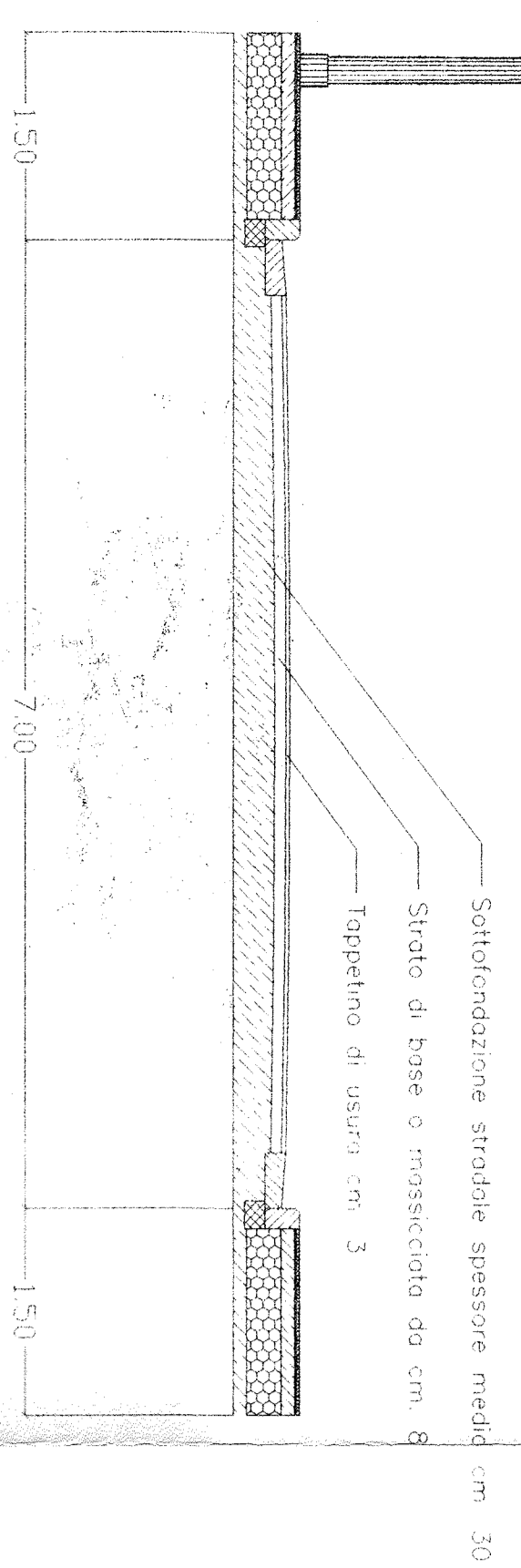
Particolare basamento palo d'illuminazione

Scala 1:10

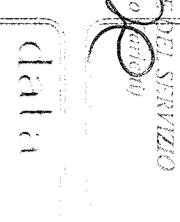


Particolare sezione stradale tipo

Scala 1:50



PARTICOLARI COSTRUTTIVI



ING. GIORGIO MOSTALLINO
Via Piave n.82 - ASSEMINI (CA) TEL. 940559

COMUNE DI DECIMOMANNU PROV. CA

PROGETTO:
LOTTIZZAZIONE "IS BAGANTINI"

PROGETTA: I.R.P. S.p.A. 1973
PROGETTO: I.R.P. S.p.A. 1973
AUTORIZZAZIONE: I.R.P. S.p.A. 1973
AUTORIZZAZIONE: I.R.P. S.p.A. 1973
AUTORIZZAZIONE: I.R.P. S.p.A. 1973

Scala in Via S. Giacomo - Via Is Bagantini
1973
1973
1973
1973
1973
1973

TECNICO
ORDINE INGENGERI
N. 14
1973

DATA