

COMUNE DI DECIMOMANNU
 COMMISSIONE EDILIZIA
 (seduta n. 8 del 11-6-1981)
 Si esprime parere favorevole.

Il Presidente
[Signature]
[Signature]

ING. GIORGIO MOSTALLINO VIA MARCONI 17 - **ASSEMINI** (CA) TEL 940559

COMUNE DI DECIMOMANNU PROVINCIA DI (CA)

DIS: DATA AGG. AGG.

lottizzazione

scale:
 1:200
 1:500
 1:2000

PLANIMETRIE - ZONIZZAZIONE - PLANOVOLUMETRICO -
 TIPOLOGIA EDILIZIA - SCHEMA IMPIANTI -

TAV. 1

IL TECNICO



[Signature]
 ORDINE INGEGNERI
 PROVINCIA CAGLIARI

DITTA *Giulia Maria De Calabretta*
Calabretta Maria
Calabretta Angela

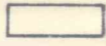


PLANIMETRIA CATASTALE

1:2.000

STRALCIO P.D.

1.2000






-  ZONA "D"
-  ZONA "B"
-  AREA DA LOTTIZZARE

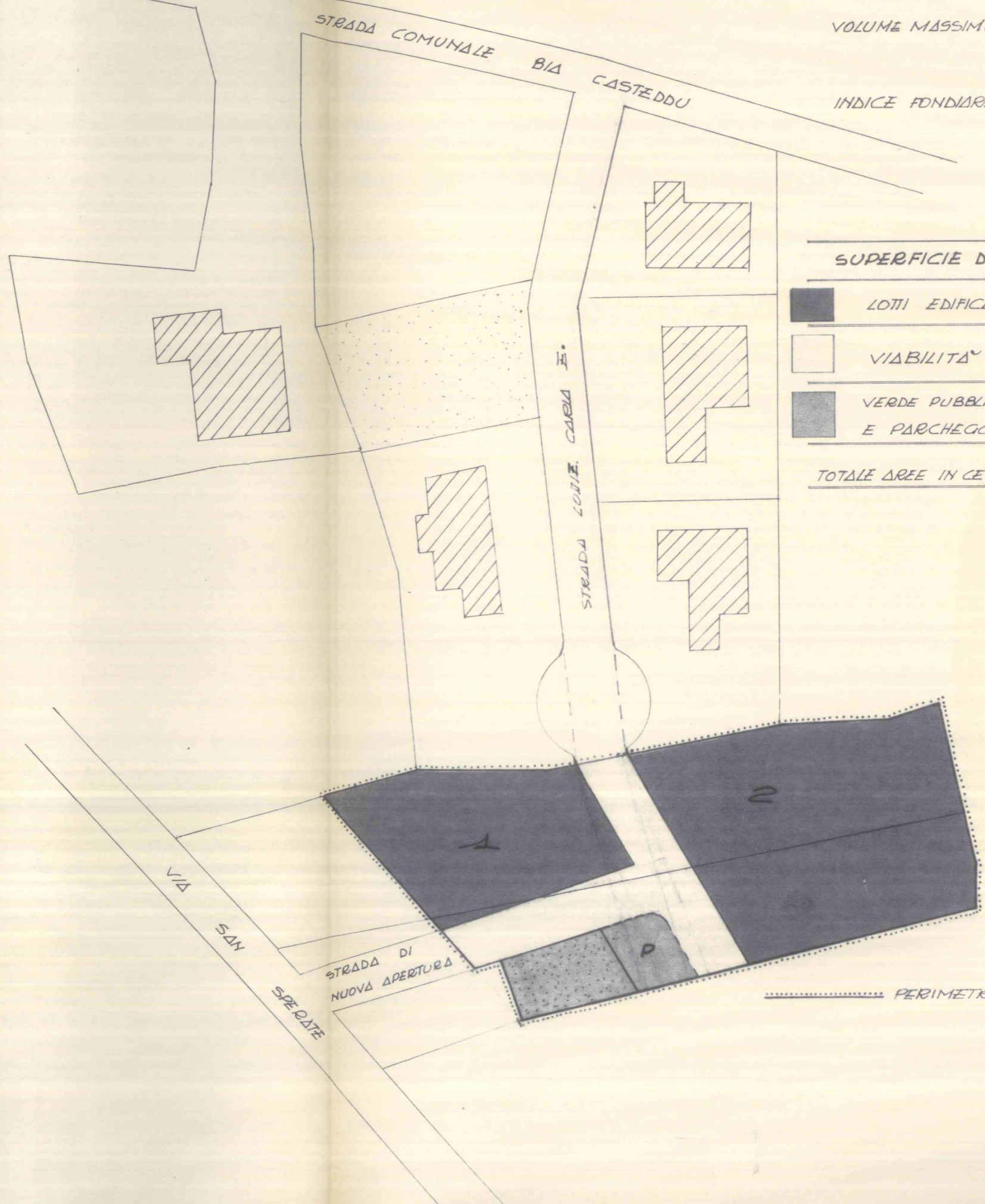
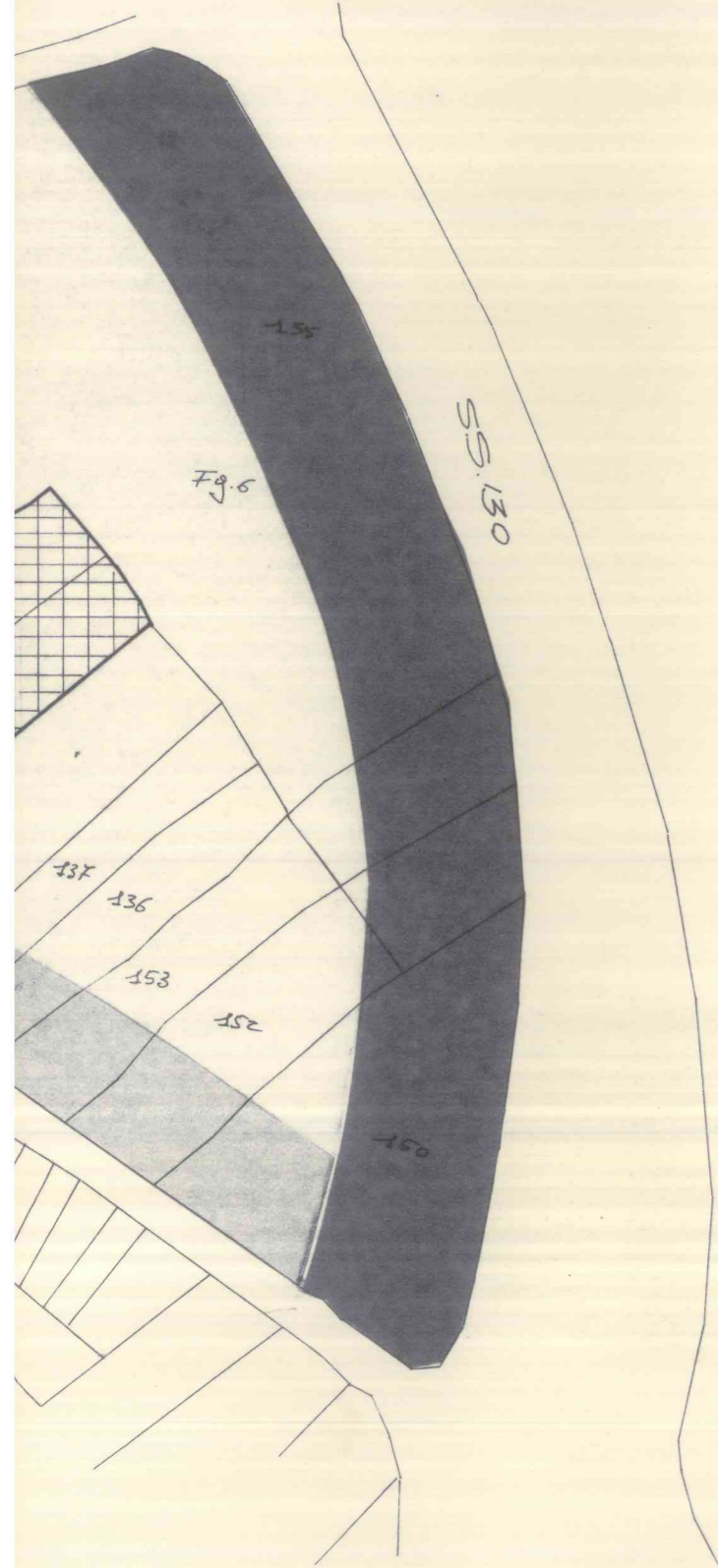
ZONIZZAZIONE

1:1000

VOLUME MASSIMO AMMISSIBILE :
 $5910 \times 3 = 17730$

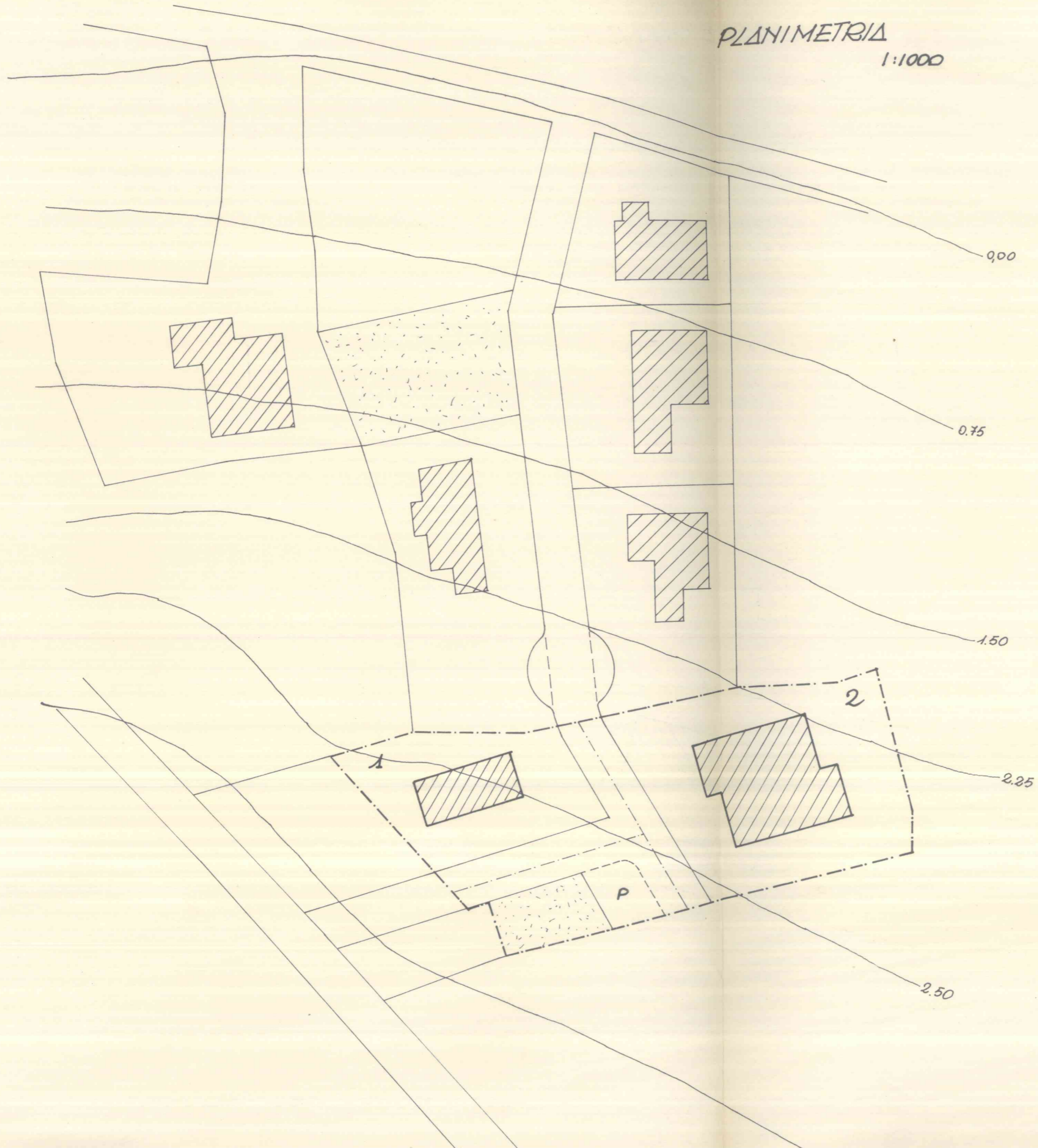
INDICE FONDIARIO : $\frac{17730}{4275} = 4.14 > 4 \text{ mcl/mq}$

SUPERFICIE D'INTERVENTO		m ²	%
	LOTTE EDIFICABILI	4275	72,33%
	VIABILITA'	1035	17,51%
	VERDE PUBBLICO, SERVIZI E PARCHEGGI	600	10,15%
TOTALE AREE IN CESSIONE		1635	27,67%



..... PERIMETRO AREA DA LOTIZZARE

ΠΛΑΝΙΜΕΤΡΙΑ
1:1000



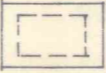
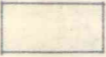


PLANIVOLUMETRICO

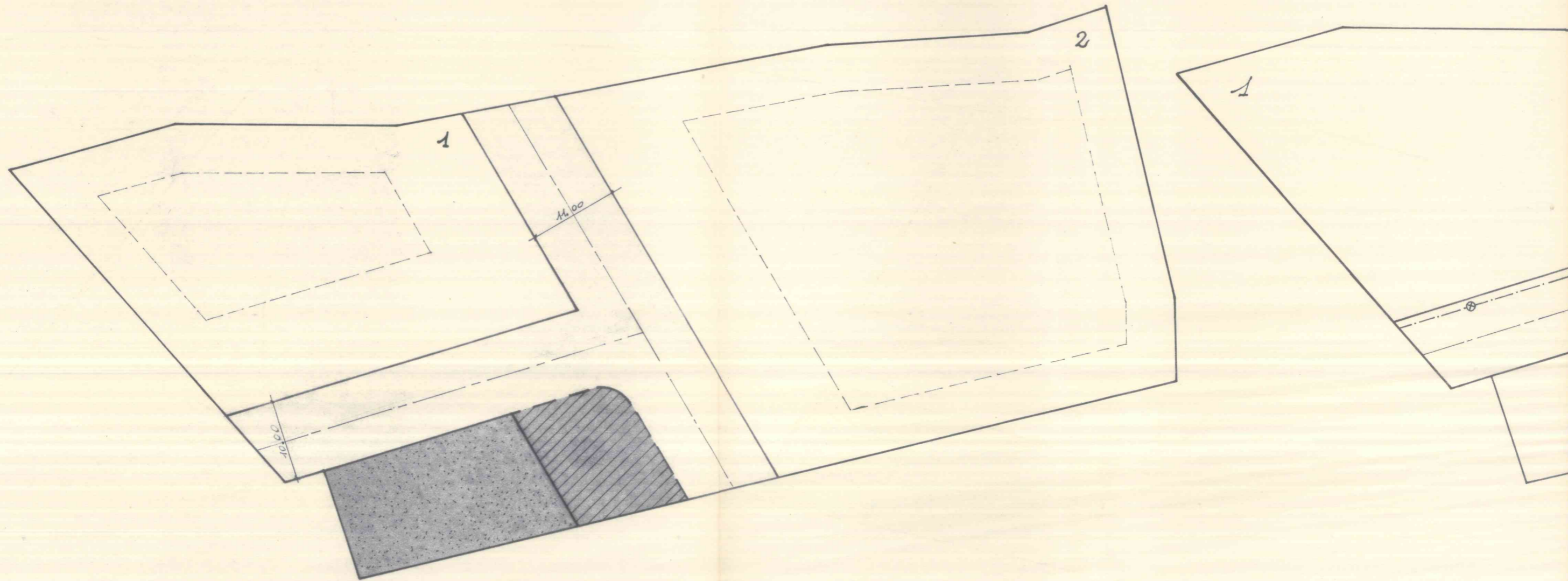
1:500

SCHEMA

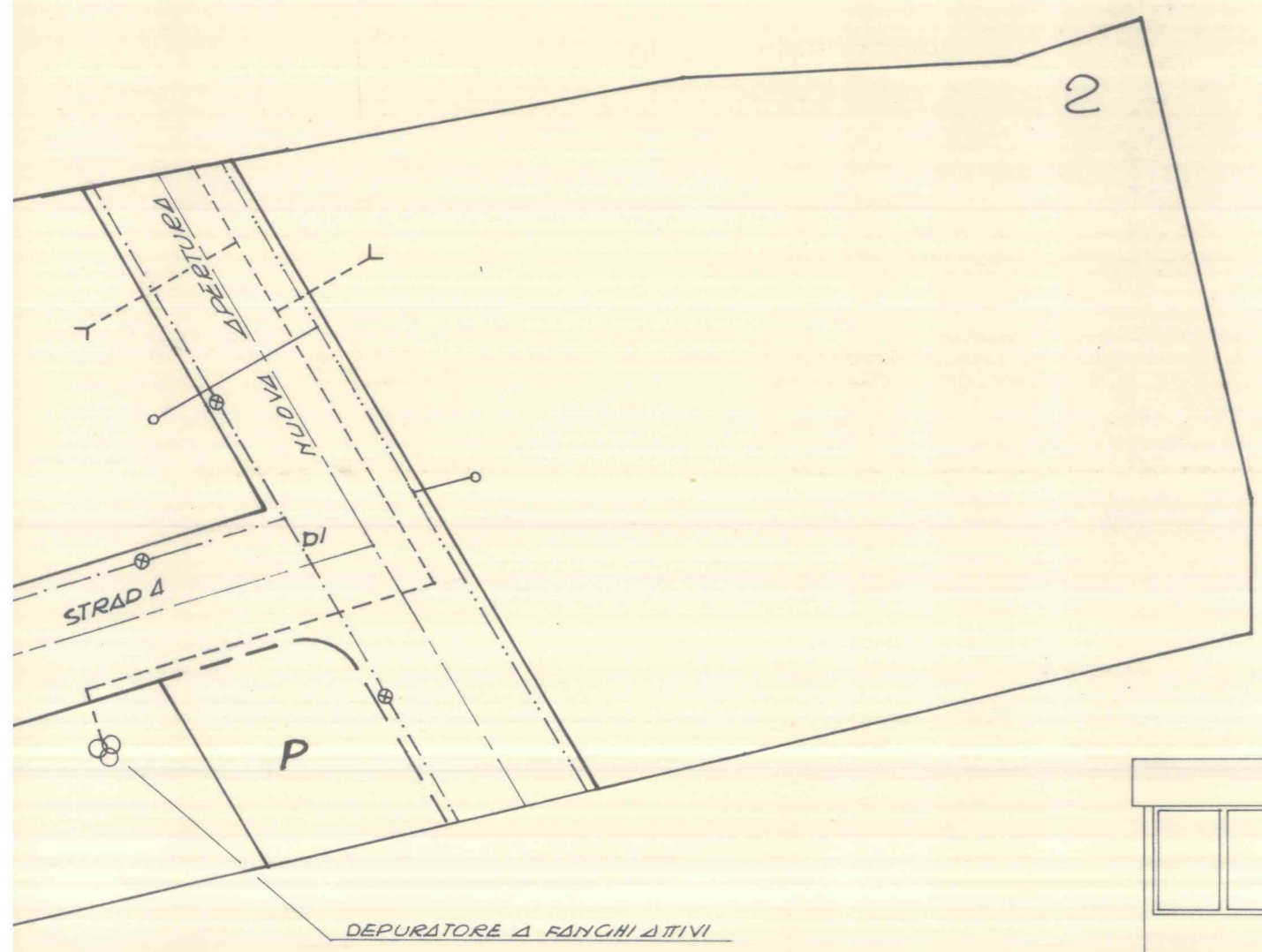
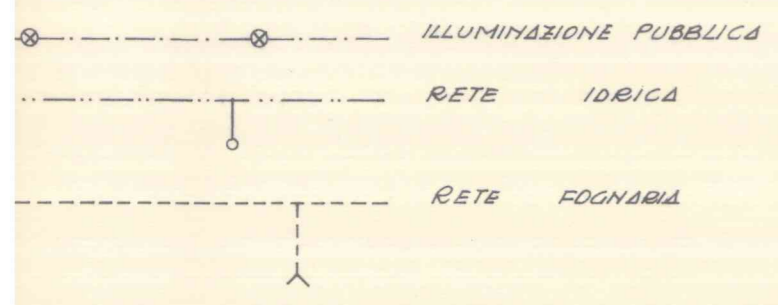
SUPERFICIE LOTTI E VOLUMI MAX. AMMISSIBILI

N° LOTTO	SUPERFICI	VOLUMI
1	1.595	6.380
2	2.680	10.720
TOTALI	4.275	17.100

-  LOTTI EDIFICABILI
-  VIABILITA'
-  PARCHEGGIO PUBBLICO
-  VERDE PUBBLICO E SERVIZI

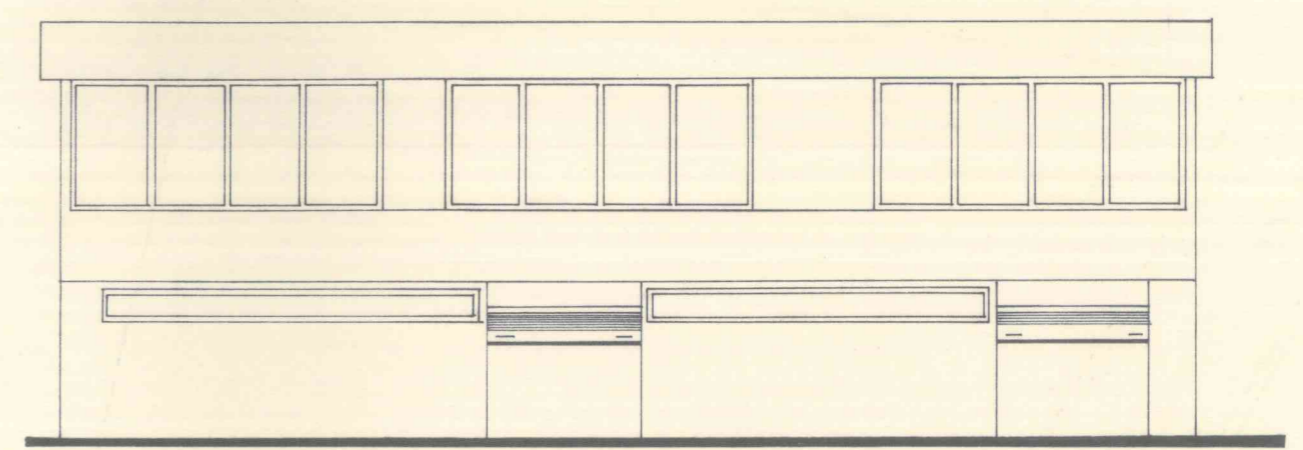


IMPIANTI
1:2500

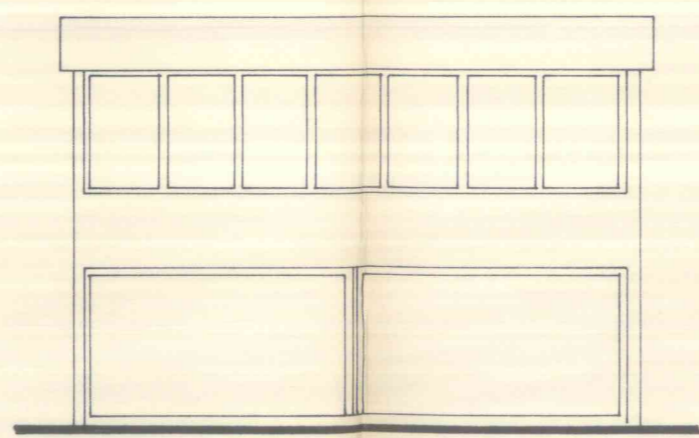


TIPOLOGIA EDILIZIA
1:200

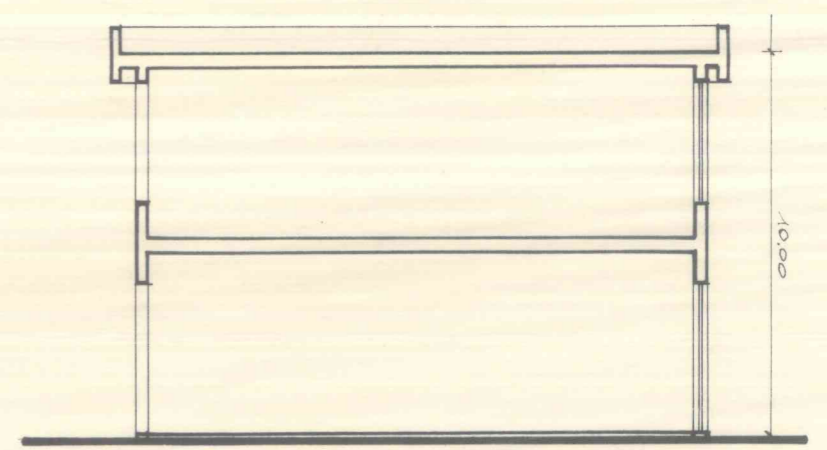
PROSPETTO LATO



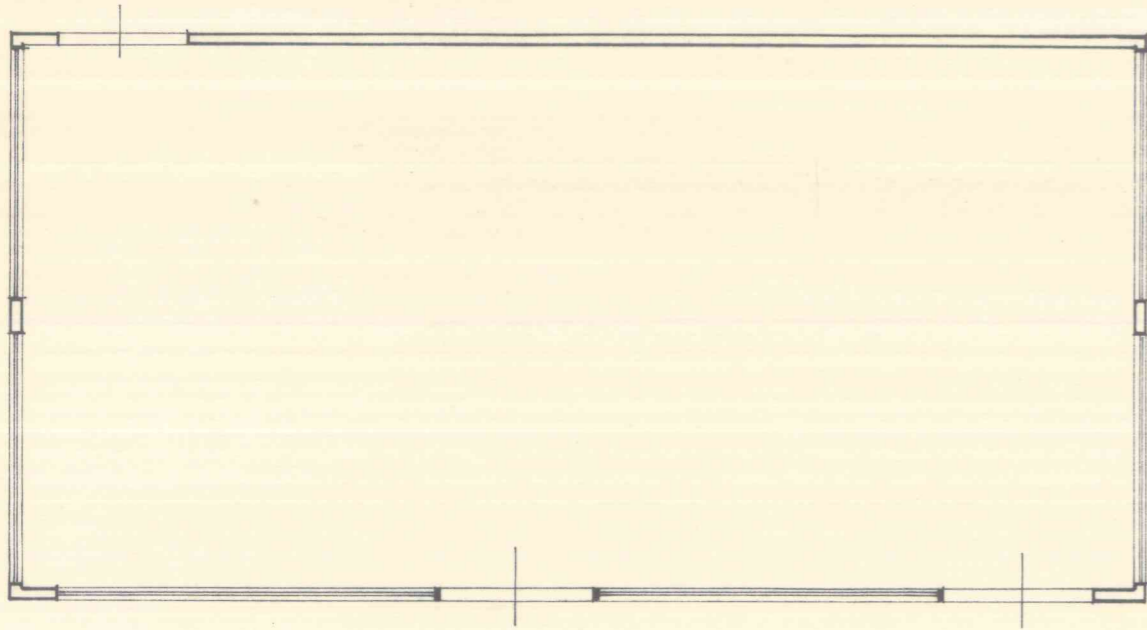
PROSPETTO FRONTE



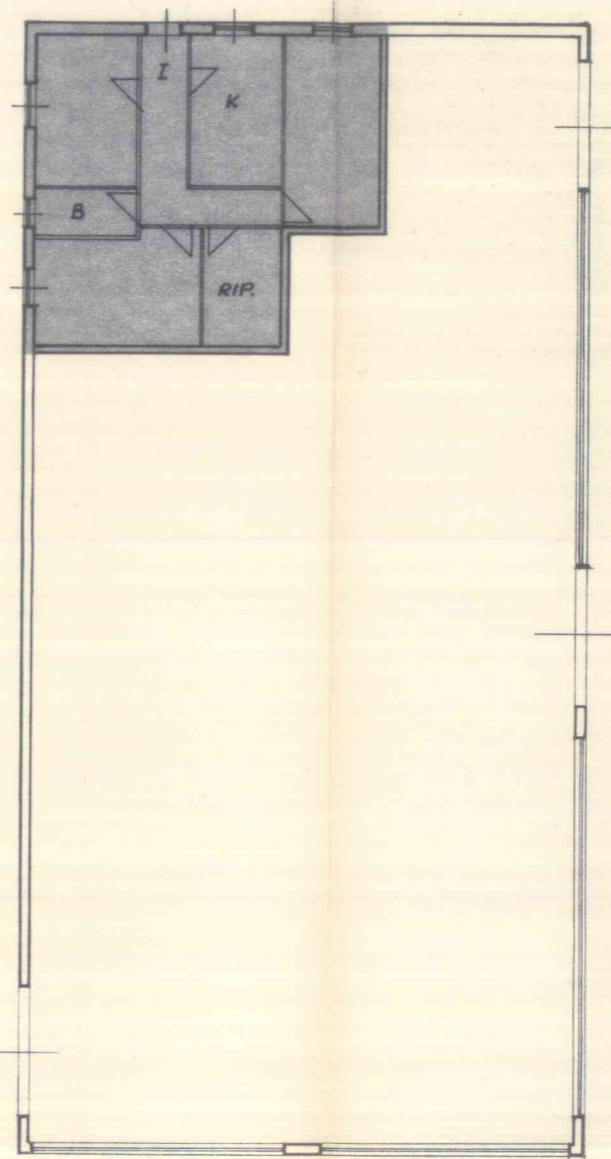
SEZIONE



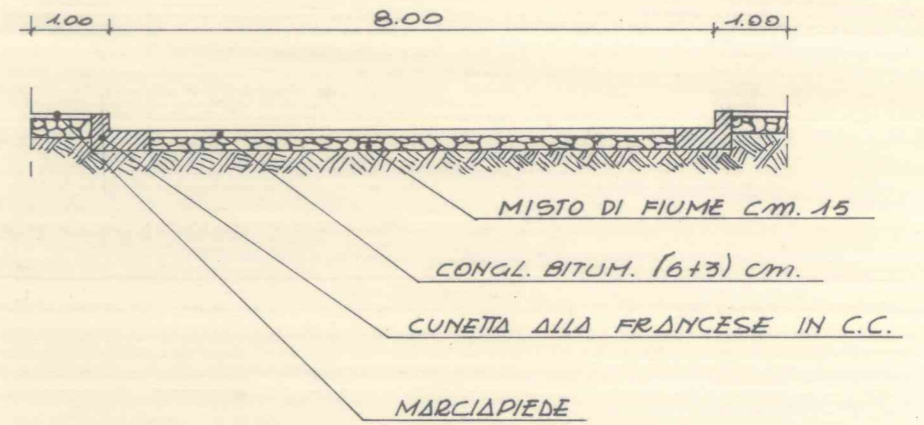
PIANTA EDIFICIO TIPO PIANO TERRA



PIANTA TIPO PRIMO PIANO

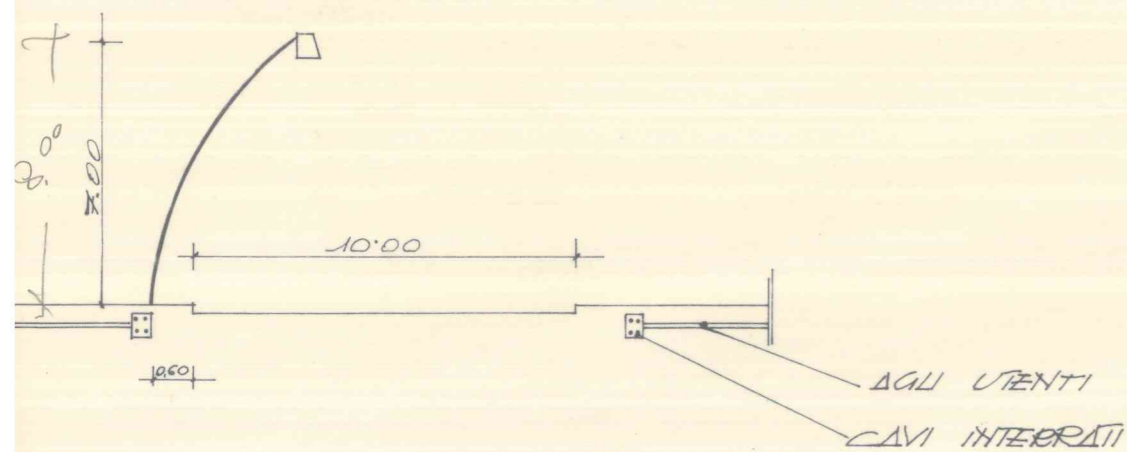


SEZIONE STRADA INTERNA DI LOTTIZZAZIONE



ILLUMINAZIONE TIPO

1:200



SEZIONE STRADA DI ARROCCAMENTO

