



## COMUNE DI DECIMOMANNU

6

DOTT. ING. GIOVANNI D'URBANO  
VIA PARROCCHIA, 6 TEL. 070-962489  
09033 DECIMOMANNU -CA-

Progetto: PIANO DI LOTTIZZAZIONE PANI-ATZORI

Oggetto tav.: TIPOLOGIA EDILIZIA E PARTICOLARI  
COSTRUTTIVI

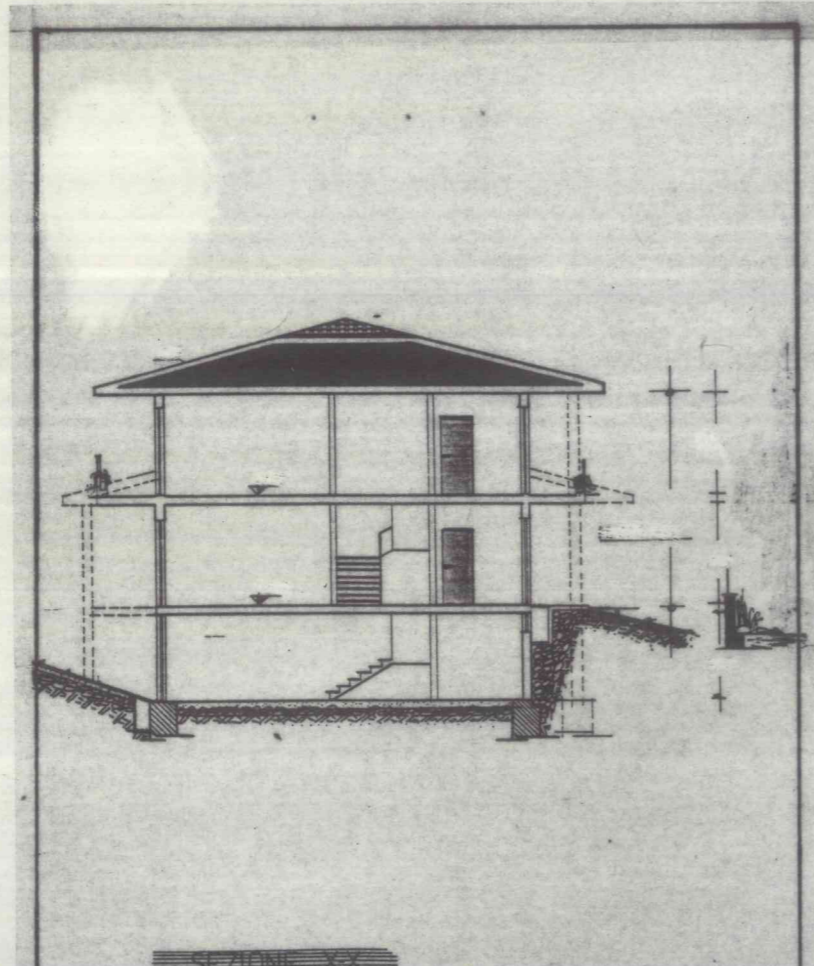
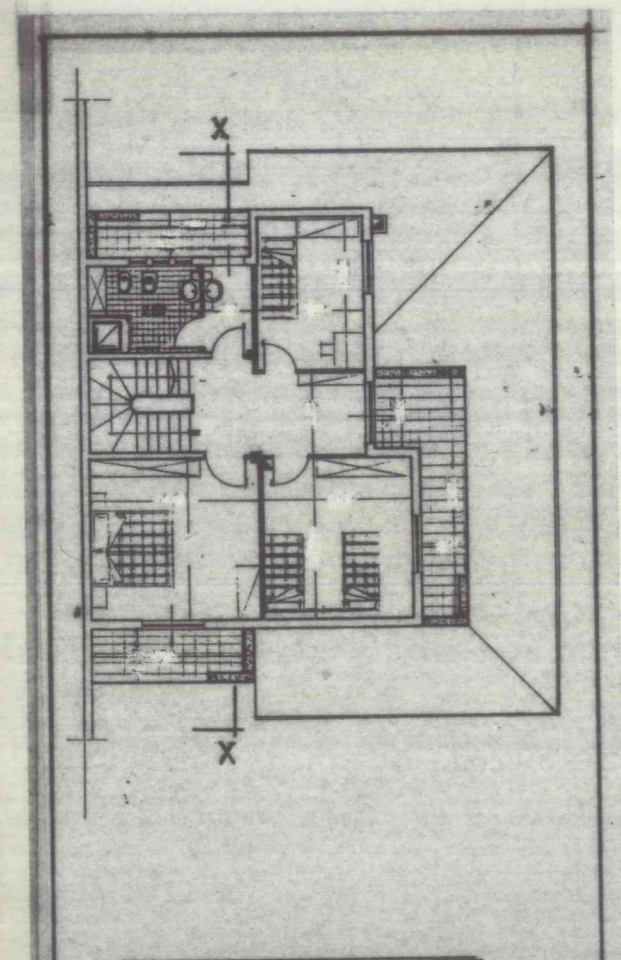
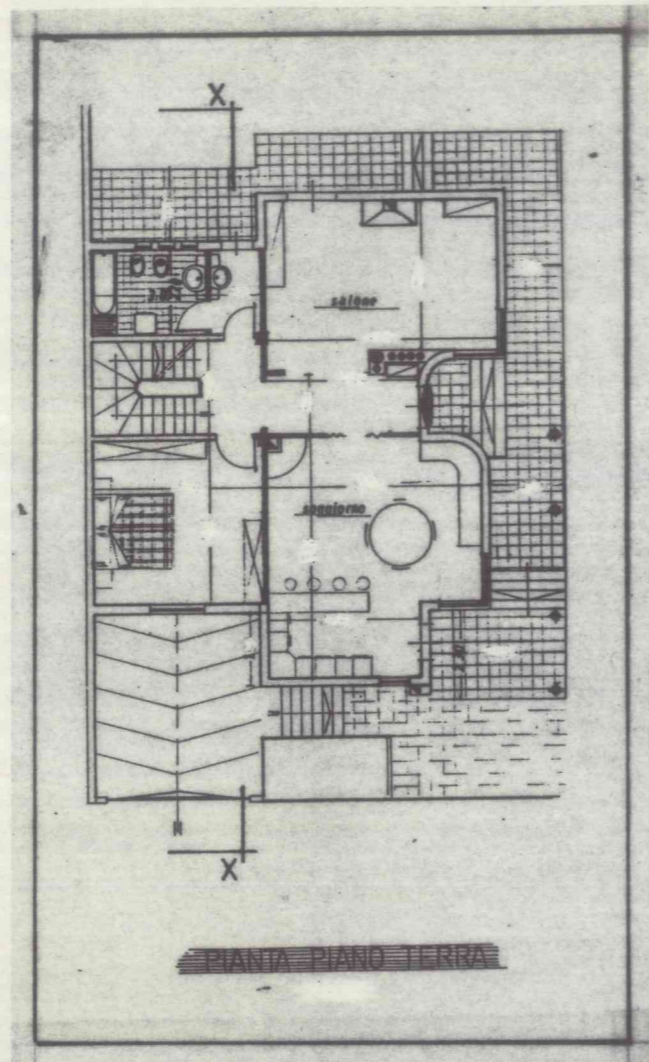
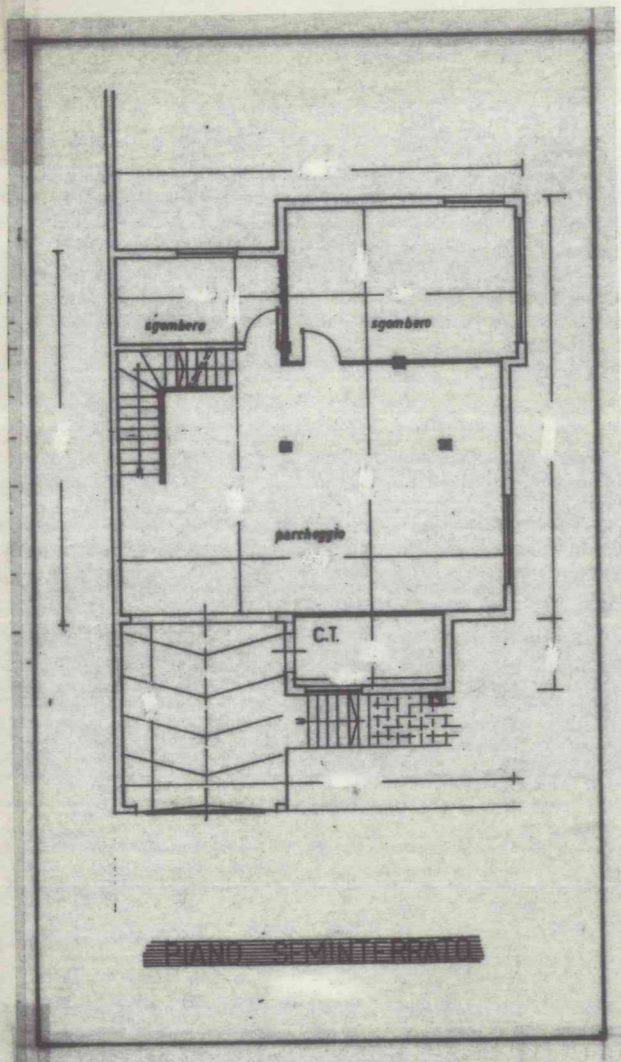
Committente(i):

*Pani Mo*

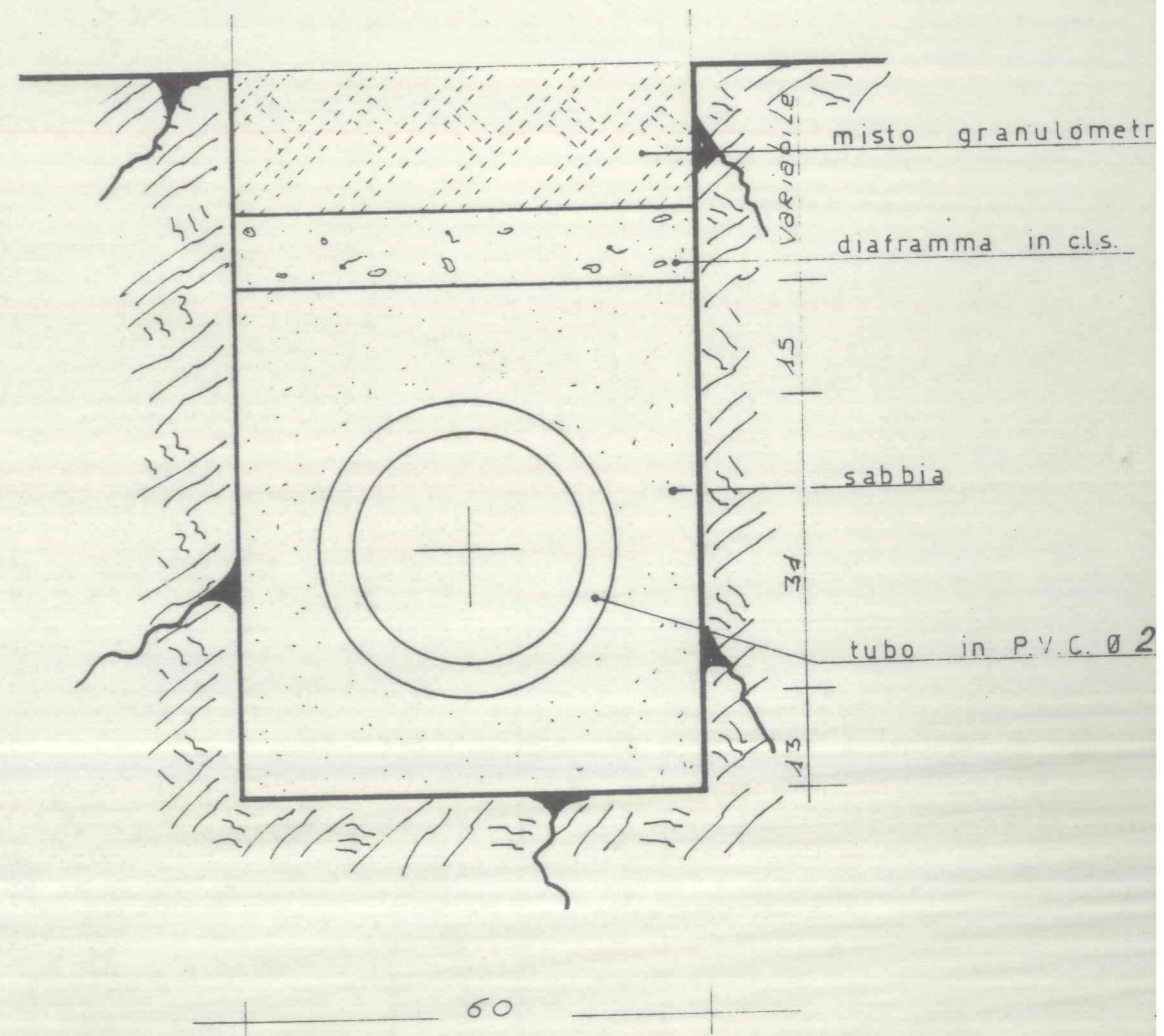
Sig.ri PANI-ATZORI  
*Atzori Antonietta*

Data

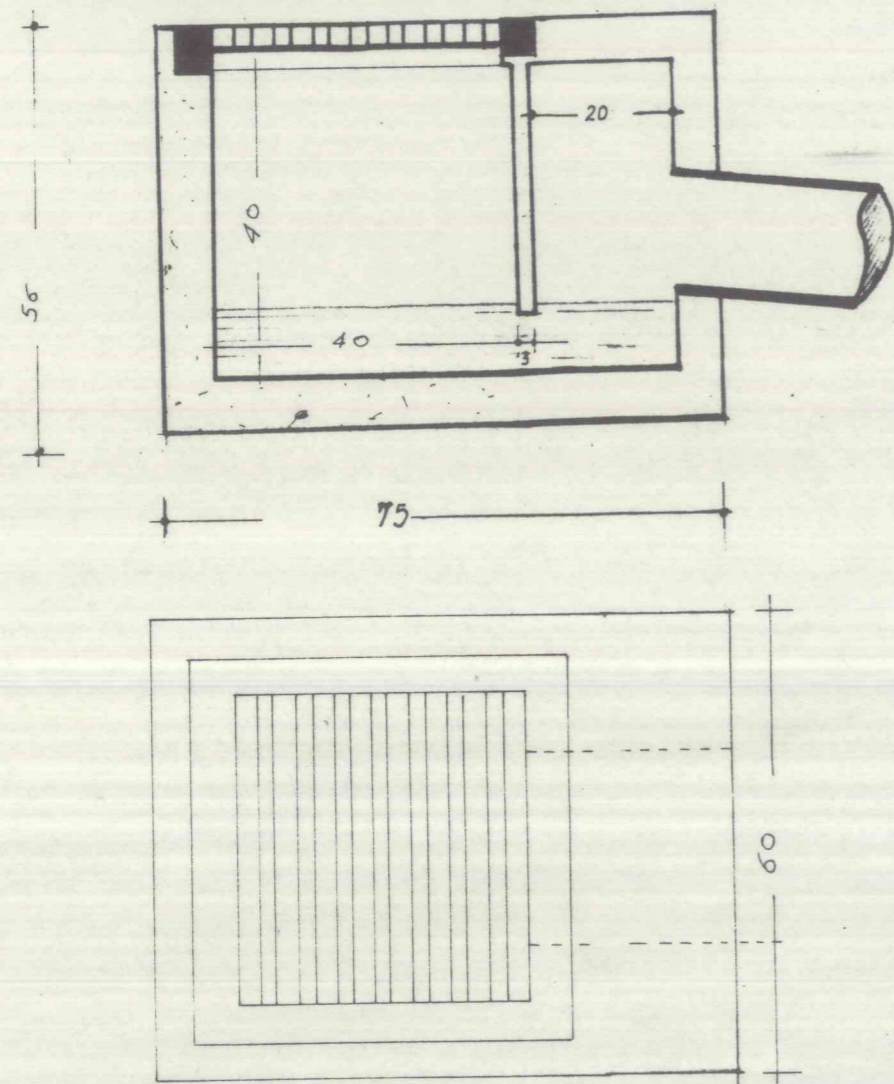
SETT. '93



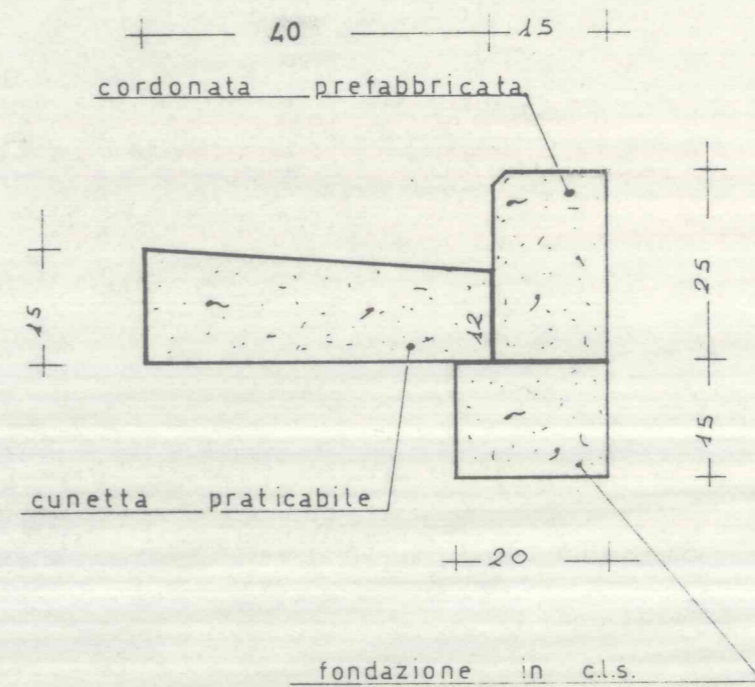
particolare del fognolo  
1:10



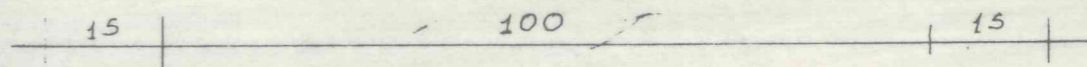
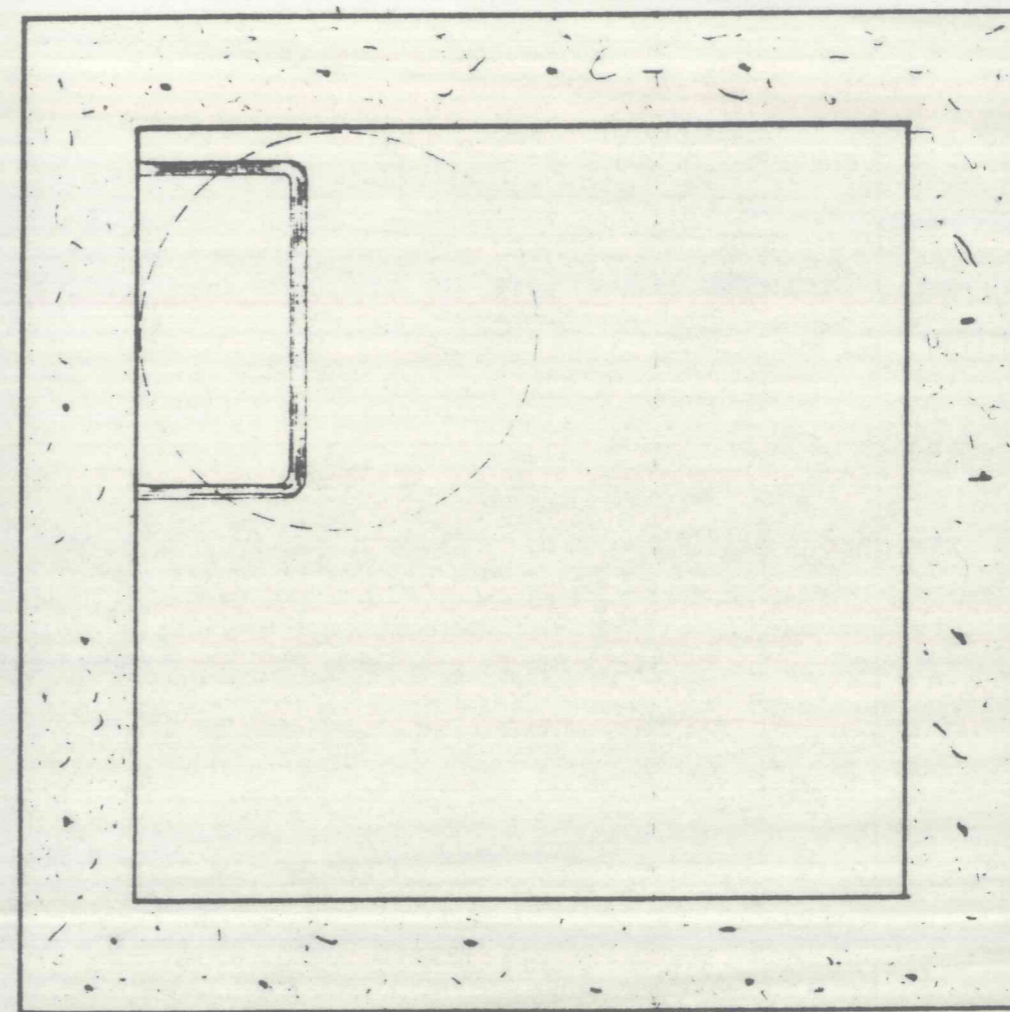
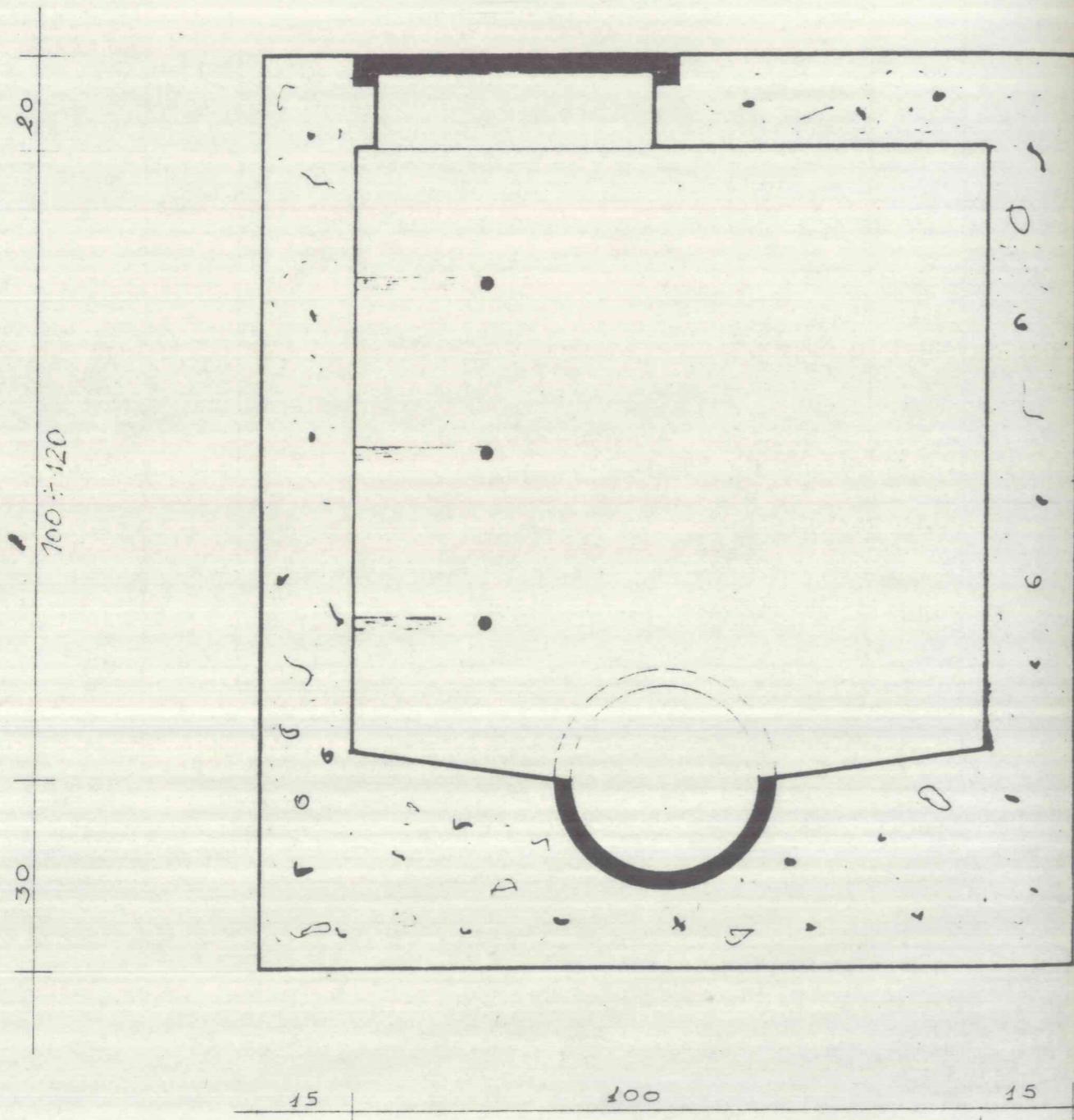
particolare caditoia 1:10



particolare cunetta 1:10

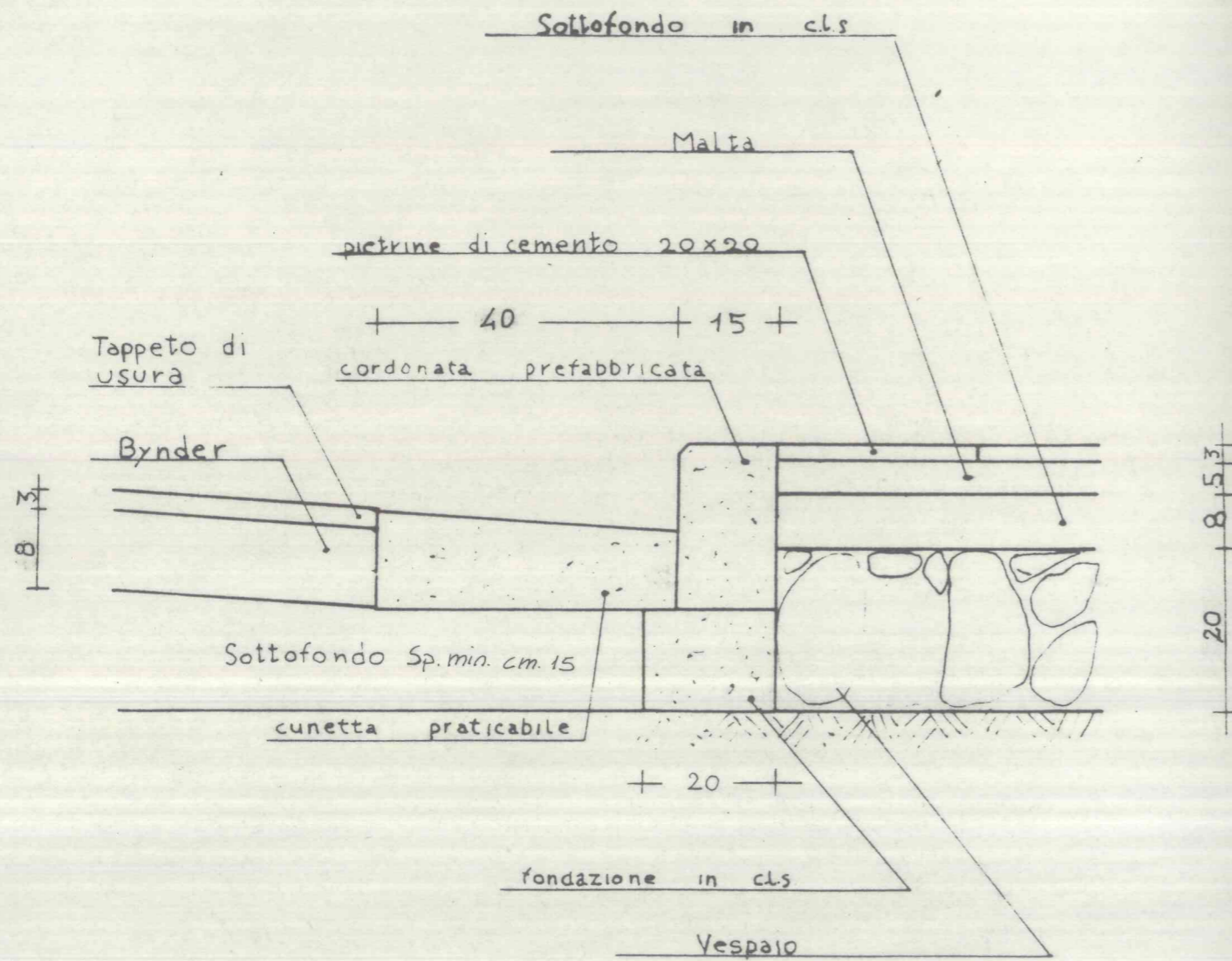


particolare pozzetto d' ispezione 1:10

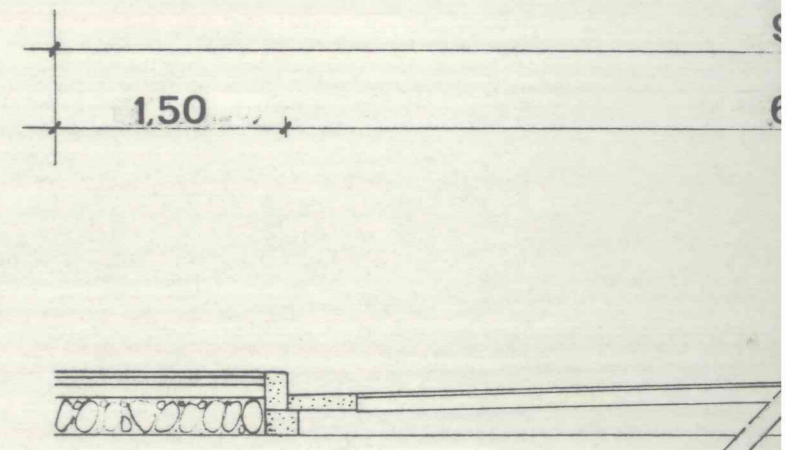


Particolare strada con cunetta e marciapiede

1:10

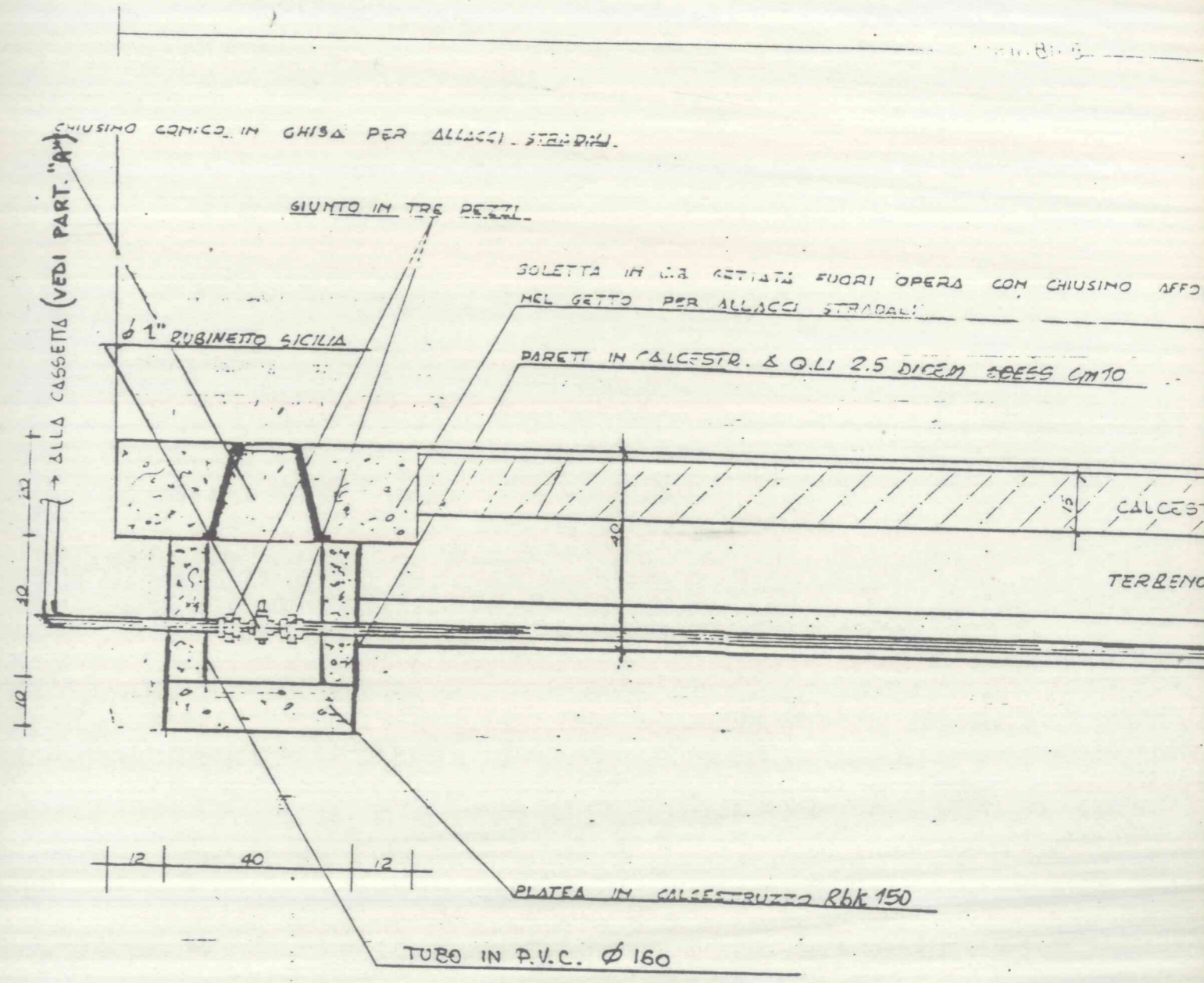


1:50

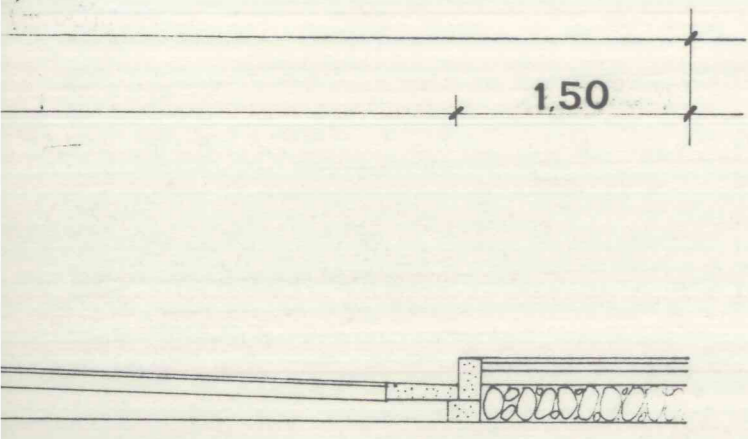


DARTICOLARE SEZIONE STRA

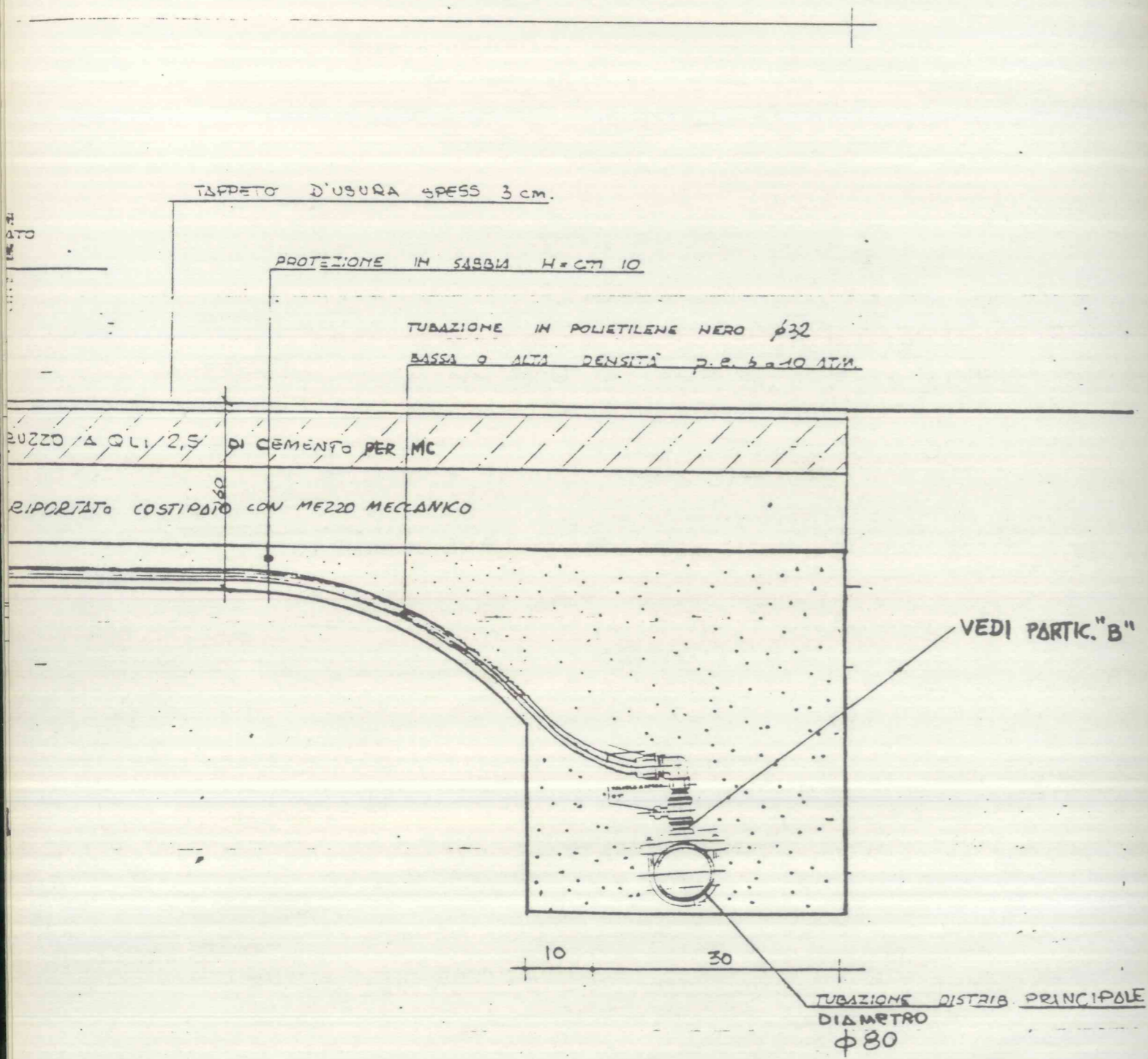
# ALLACCIO IDRICO



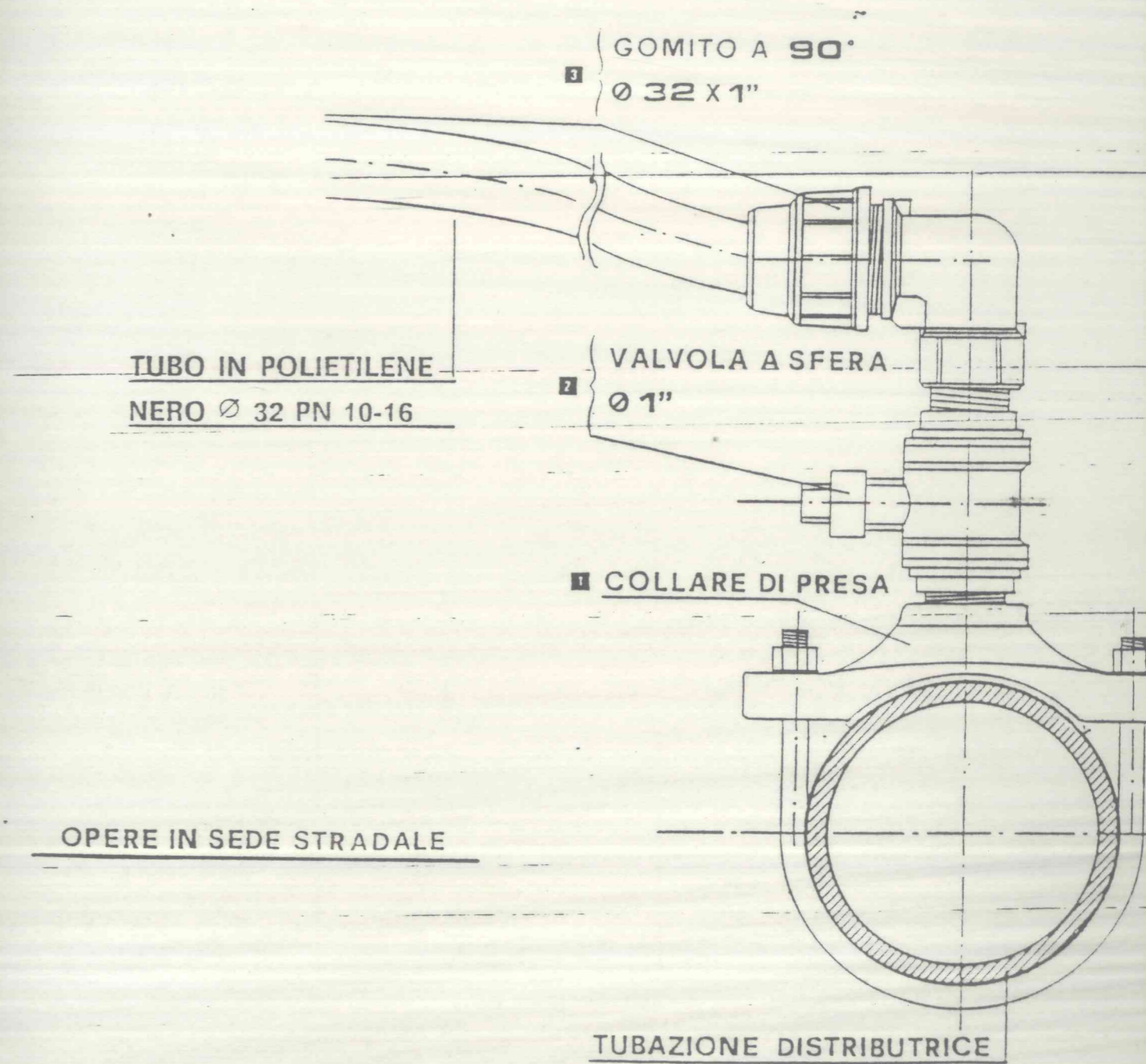
1.50



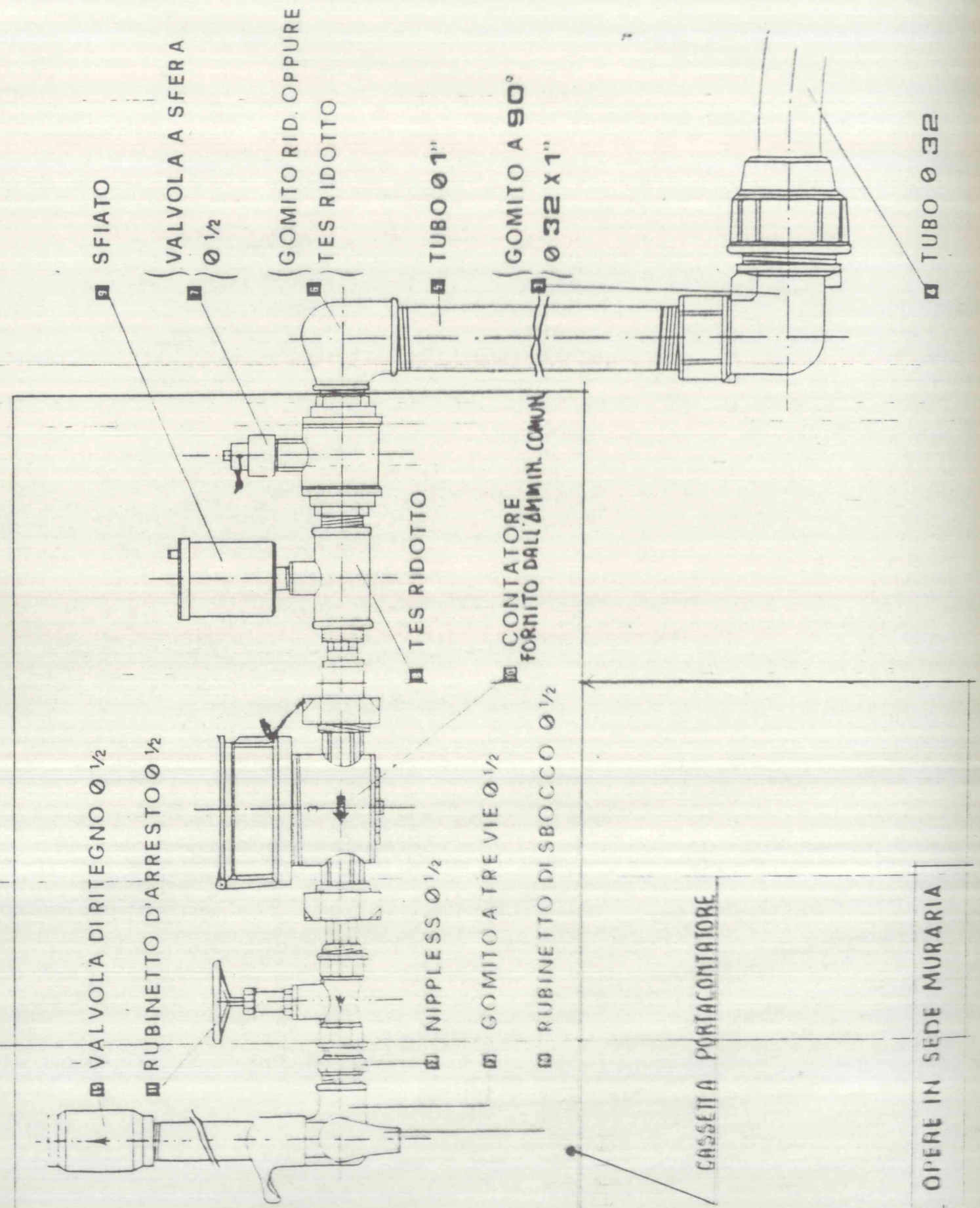
SC. 1:10



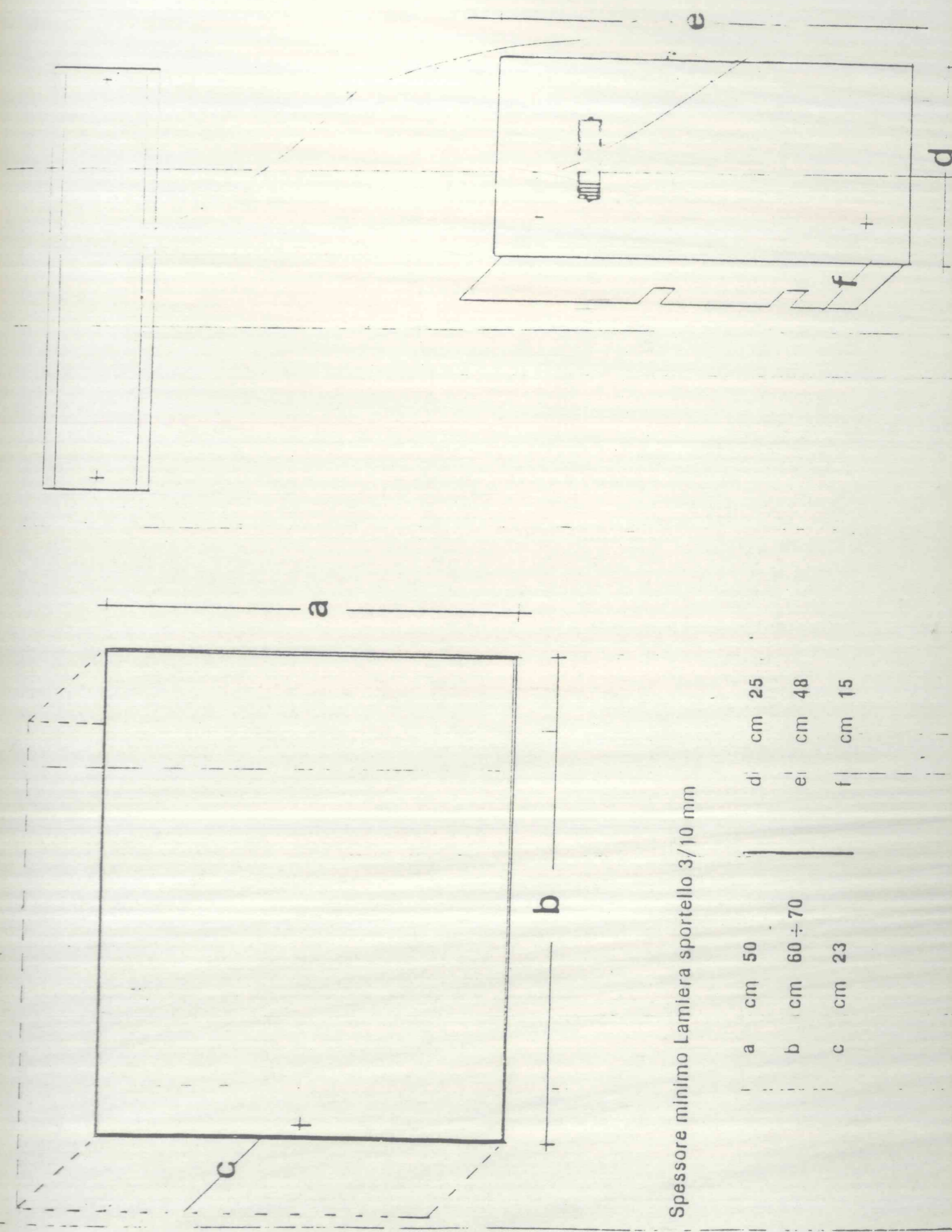
PARTICOLARE "B"  
ALLACCIO IDRICO TIPO



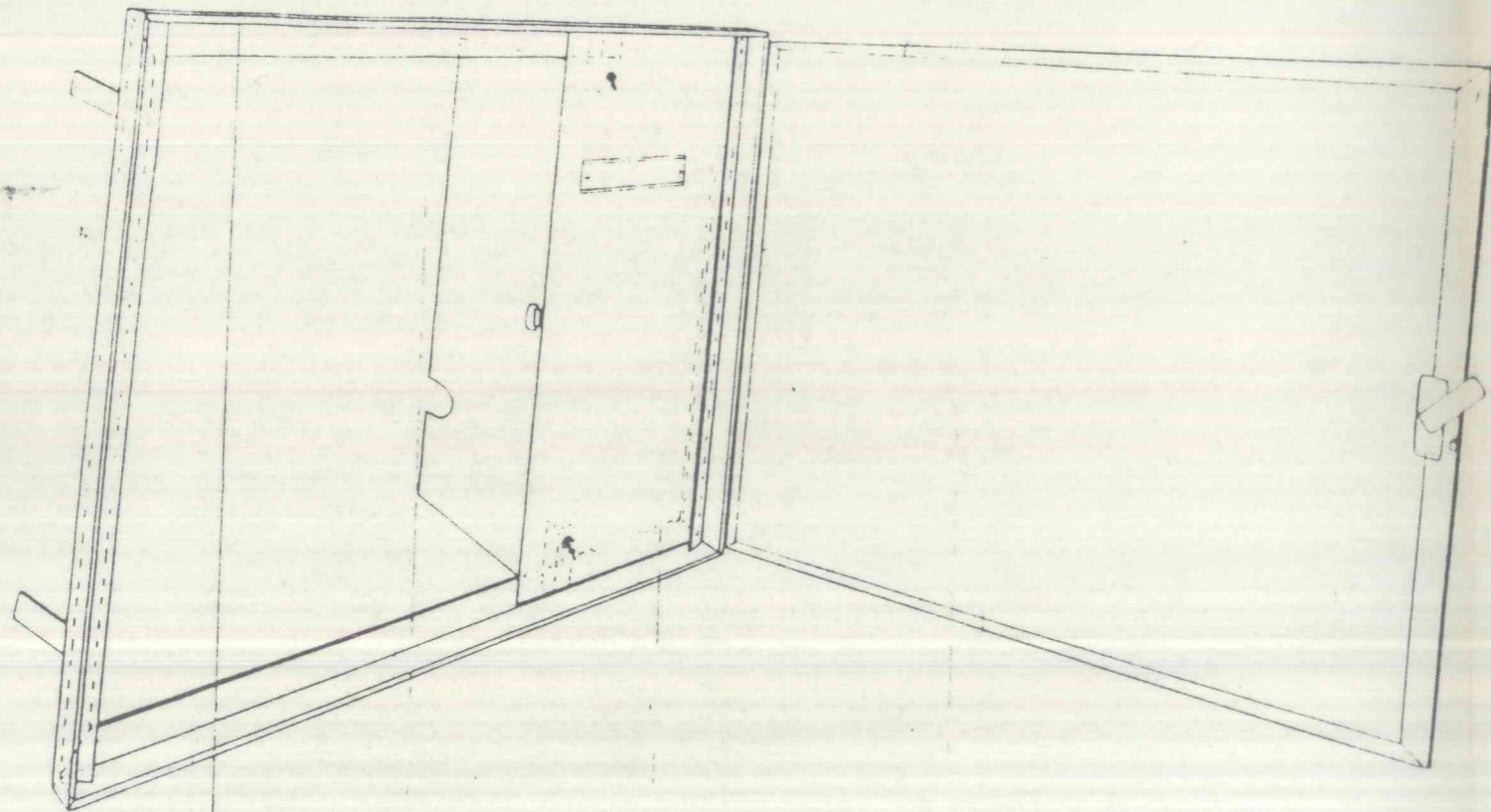
PARTICOLARE "A"



PARTICOLARE "C"  
CASSETTA PORTA CONTATORE





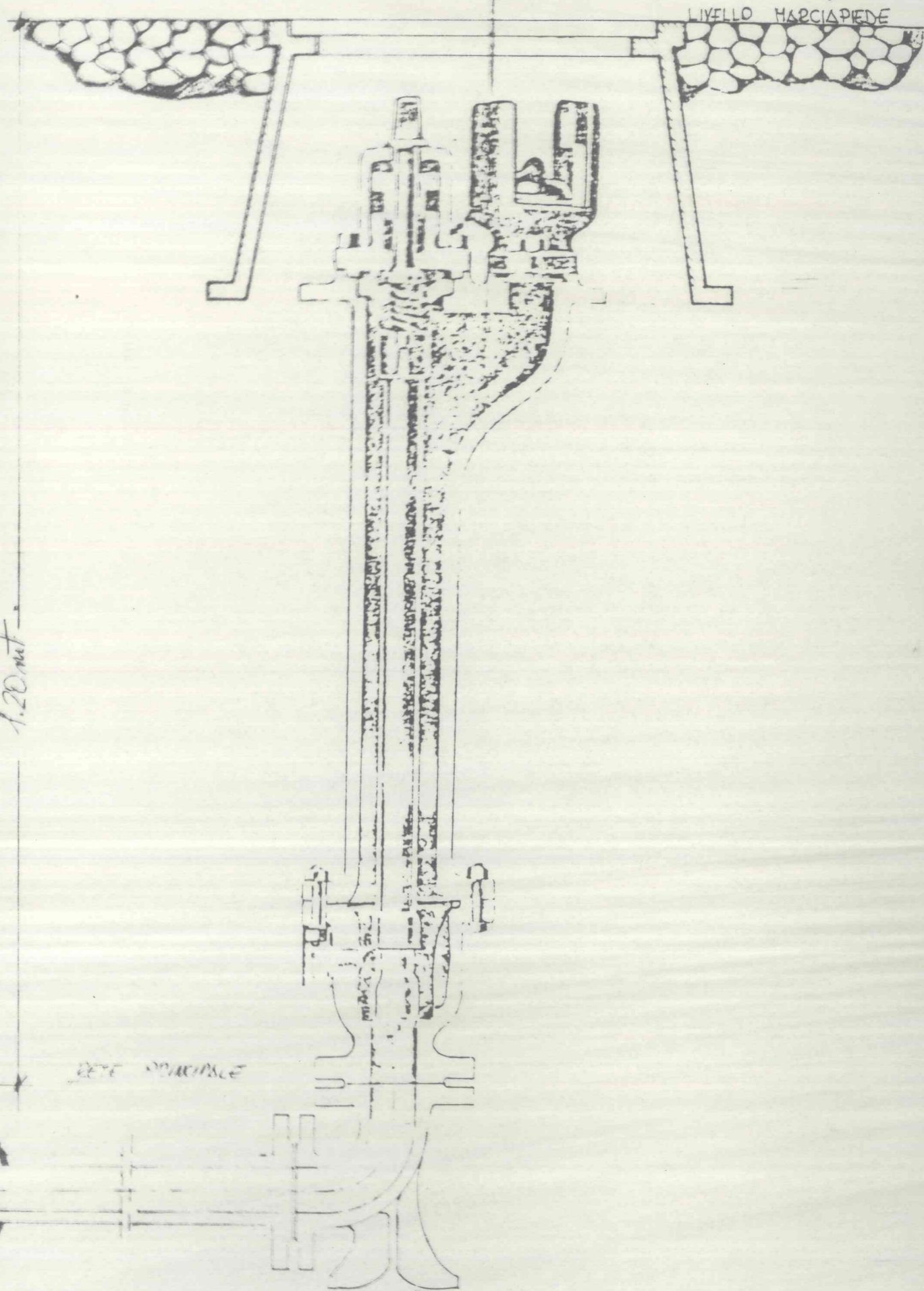


Prospettiva dello sportello

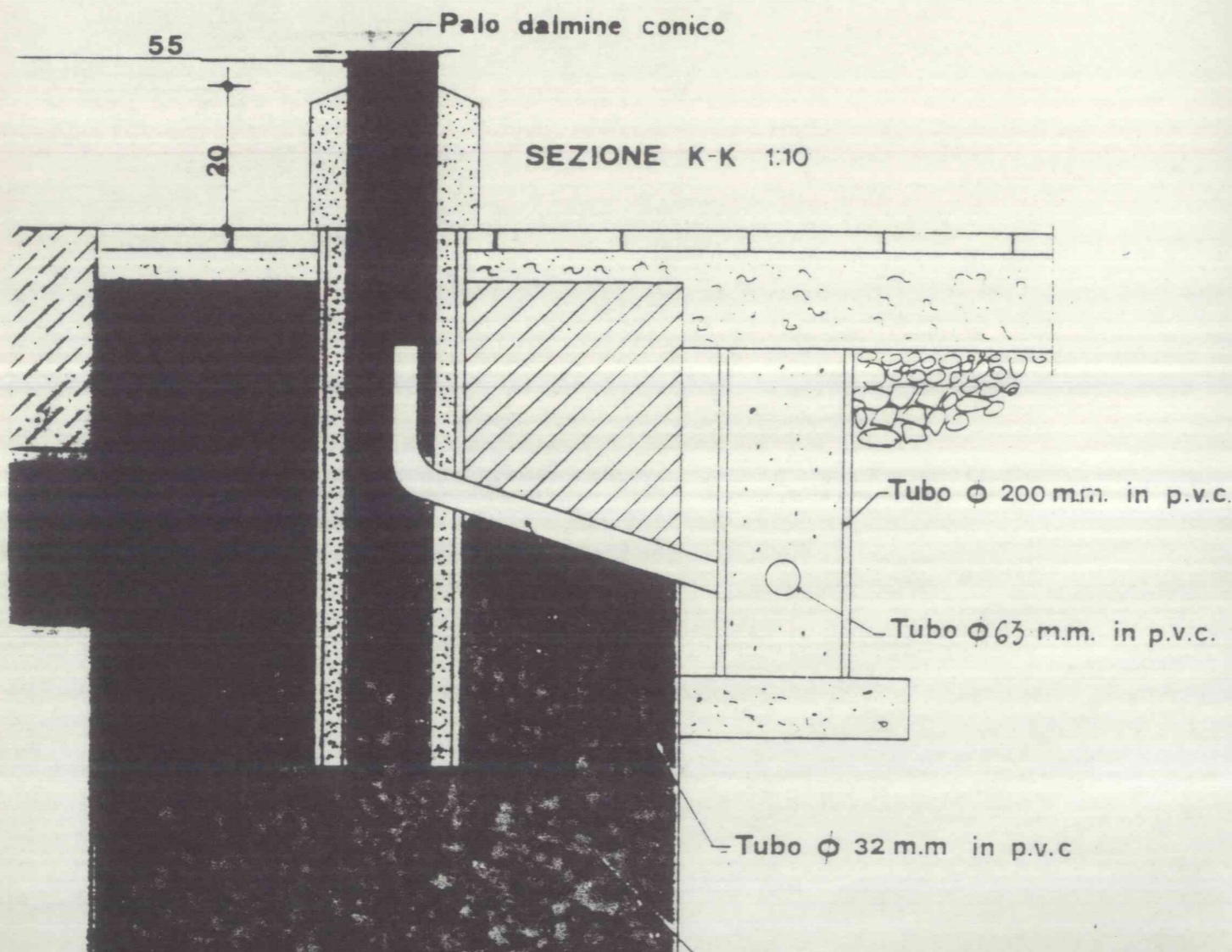
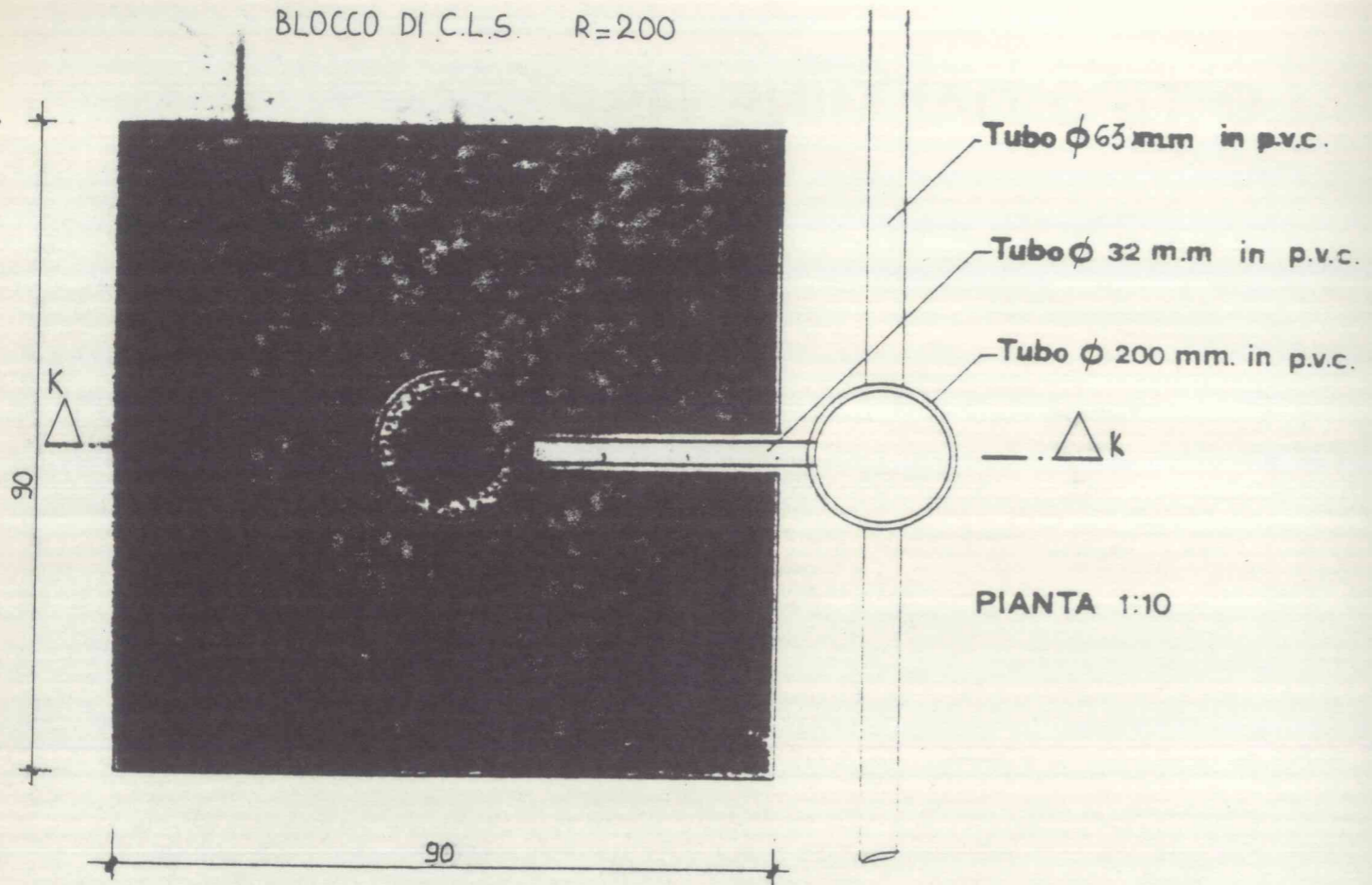
1.20 mt

RETE SOTTOFONDA

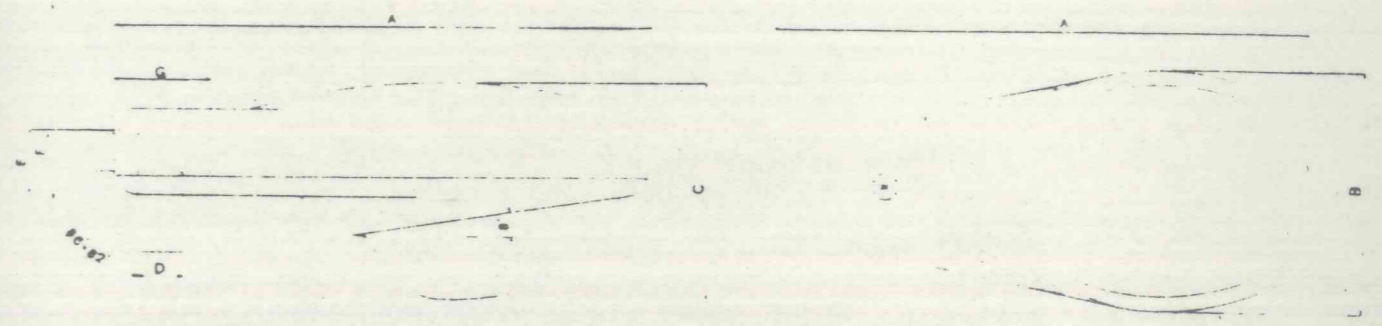
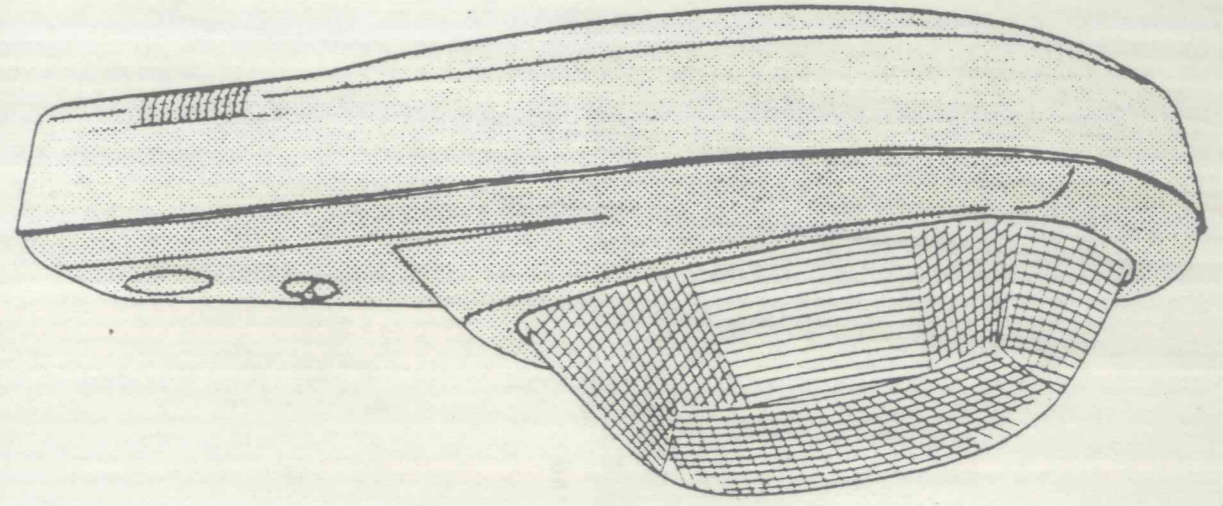
IDRANTE STRADALE SOTTOSUOLO  
SC. 1:5



BLOCCO DI C.L.S. R=200

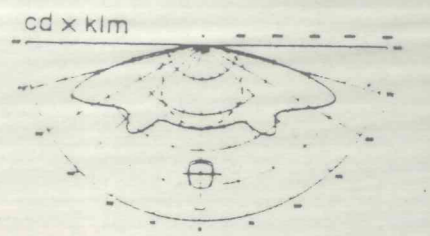


# PALO TIPO DALMINE HSP

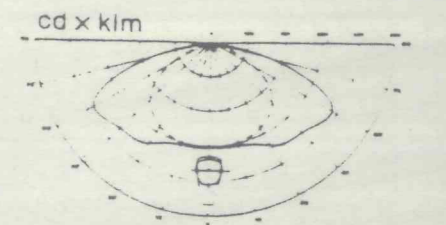


- Corpo portante in presso fusione di alluminio.
- Rifratore in vetro in Borosilicato a prismatura differenziata.
- Copertura in materia plastica speciale antiveccchiante.
- Riflettore in alluminio anodizzato titolo 99,8%.
- Predisposizione per fotocellula.
- Portalampade in porcellana E 40 a norme con regolazione orizzontale-verticale.
- Contenitore portalampade in materiale isolante.
- Piastra portareattore in materiale isolante.

PARTE CILINDRICA 0.80

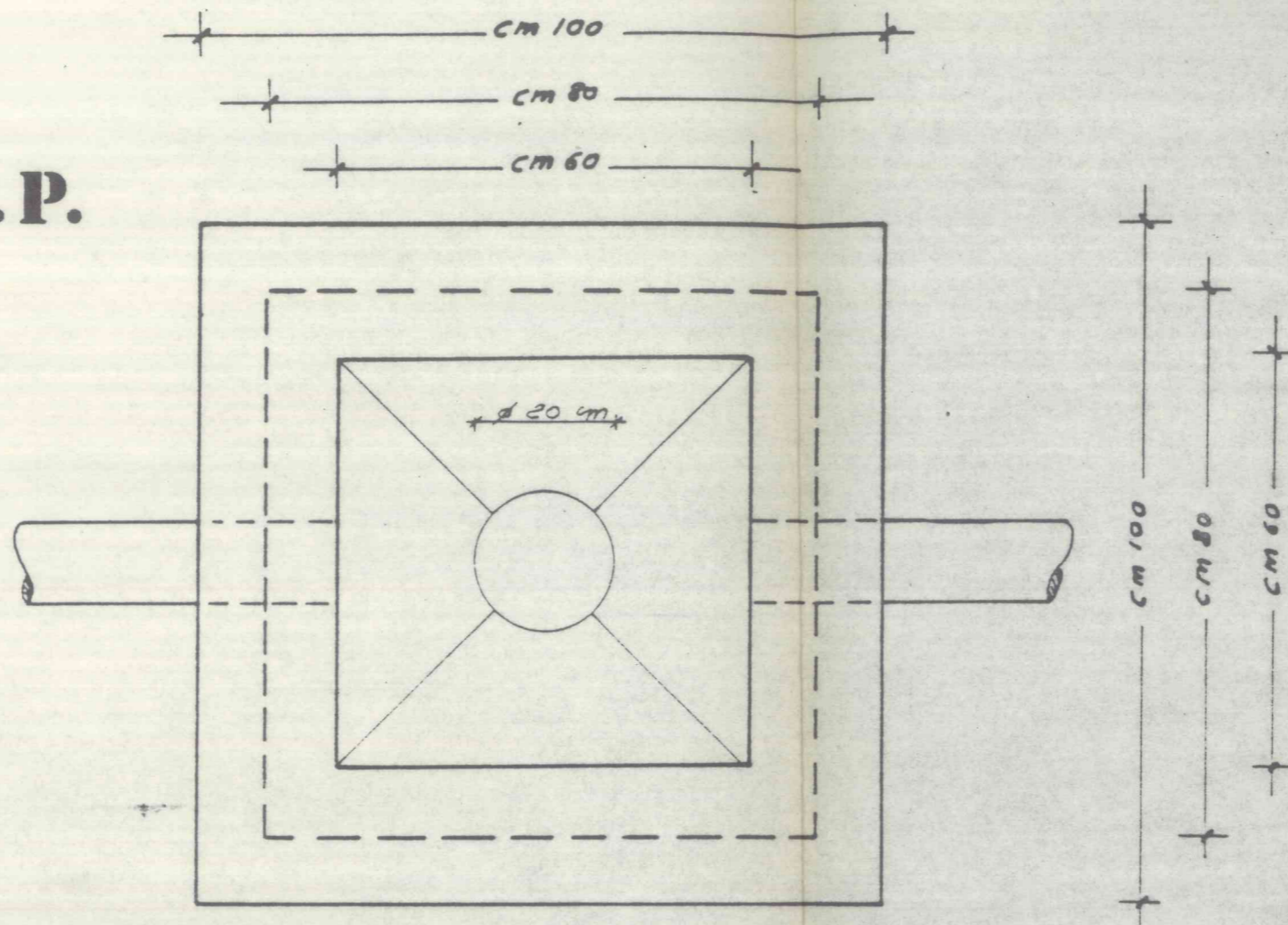


Lampade	Dimensioni m/m						
	A	B	C	D	E	F	G
1 x 100 W Na/T							
1 x 150 W Na/T							
1 x 250 W Na/T	730	340	300	60	100	60	130
1 x 125 W/Hg.				76			
1 x 250 W/Hg.							

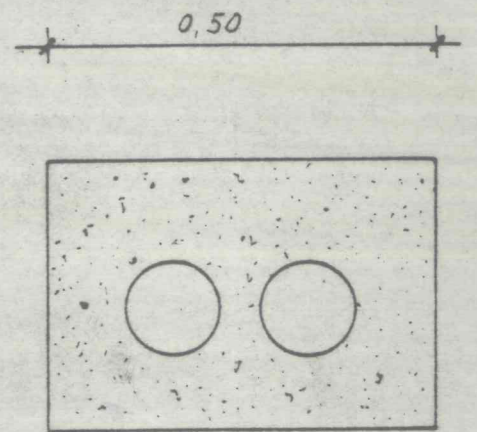


# POZZETTO S.I.P.

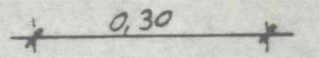
2



Rivestimento tubazioni  
in c. l. s. magro (4,5 qli/mc)



tratta con due tubi  
c. l. s. 0,15 mc/ml



tratta con un tubo  
c. l. s. 0,09 mc/ml

